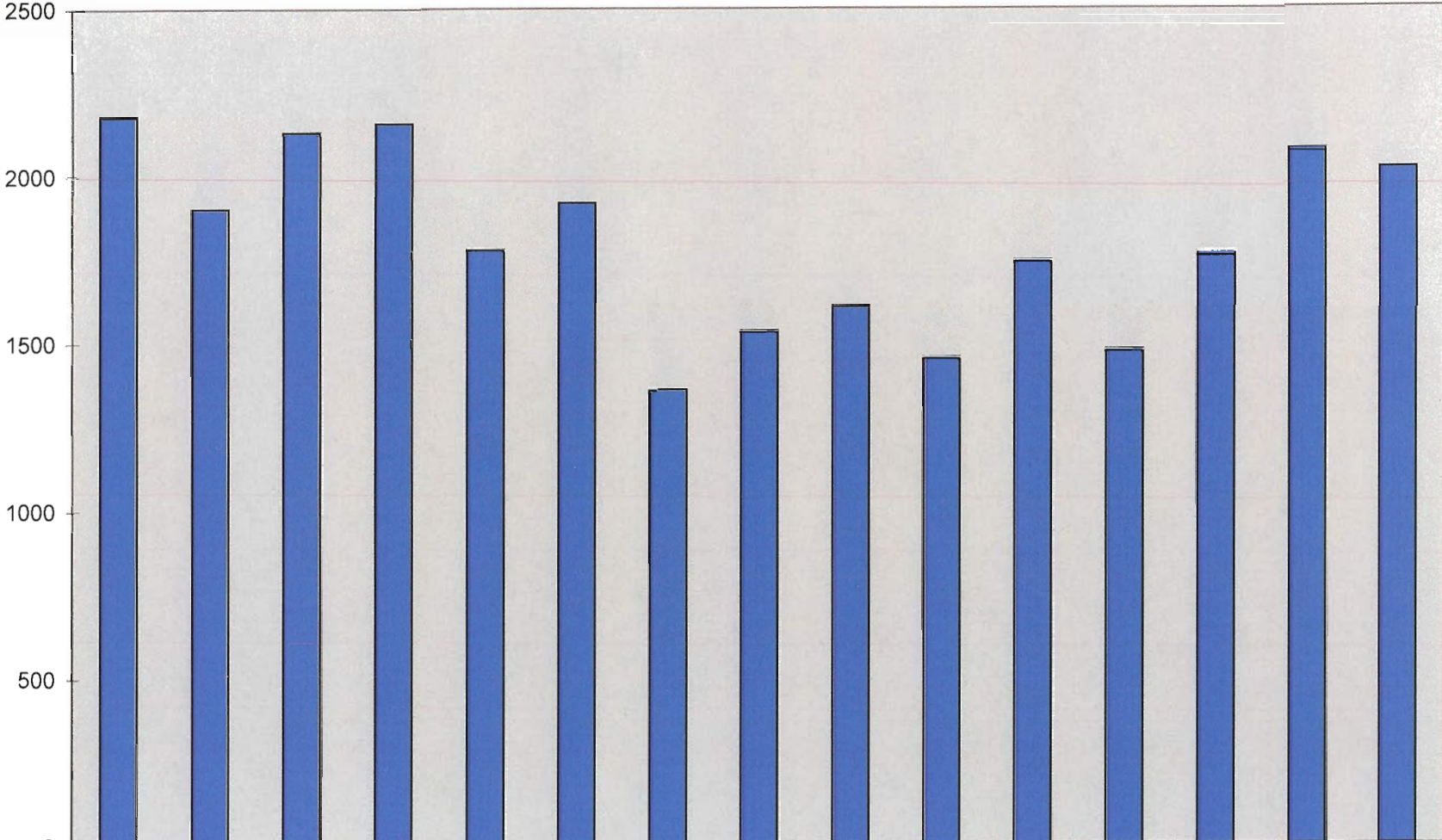


NUMBER OF INSPECTIONS



■ of Insp.

Jul-06	Jul-07	Jul-08	Aug-08	Sep-08	Oct-09	Nov-08	Dec-08	Jan-09	Feb-09	Mar-09	Apr-09	May-09	Jun-09	Jul-09
2176	1901	2130	2156	1780	1919	1358	1535	1605	1454	1743	1476	1761	2073	2014