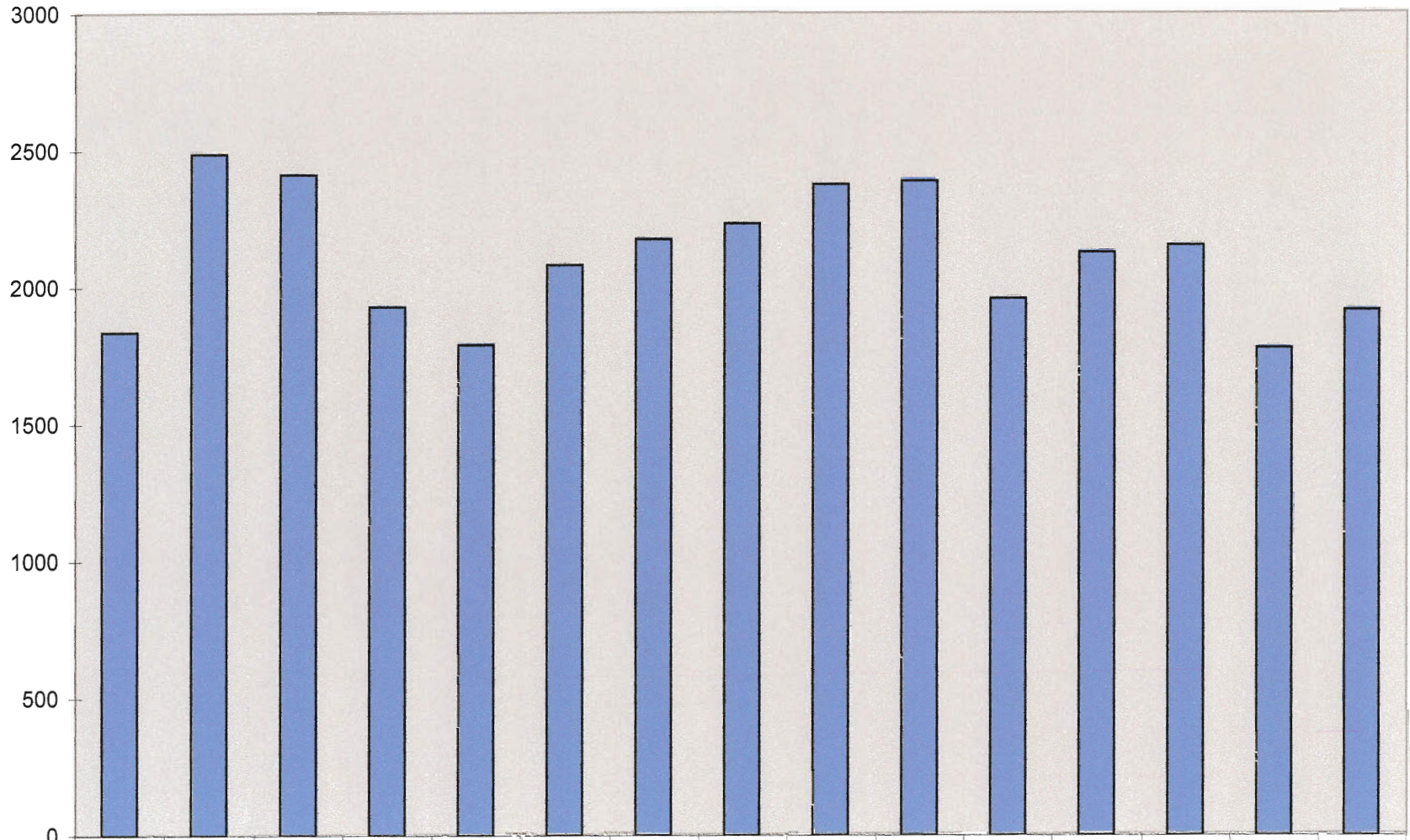


### NUMBER OF INSPECTIONS



	Oct-05	Oct-06	Oct-07	Nov-07	Dec-07	Jan-08	Feb-08	Mar-08	Apr-08	May-08	Jun-08	Jul-08	Aug-08	Sep-08	Oct-08
# of Insp.	1838	2489	2414	1931	1792	2084	2178	2236	2378	2390	1961	2130	2156	1780	1919