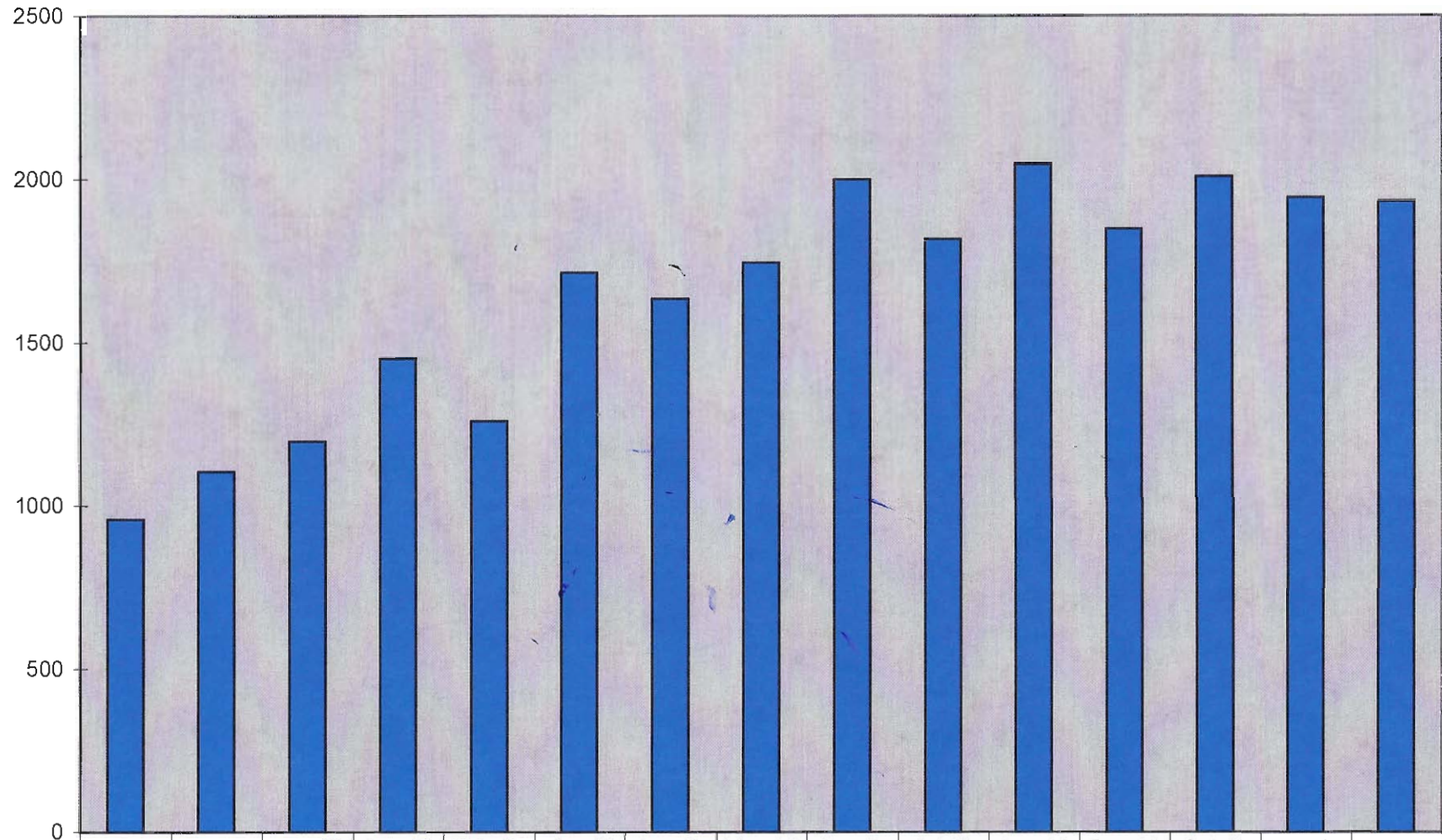


NUMBER OF INSPECTIONS



■ # of Insp

Dec-10	Dec-11	Dec-12	Jan-13	Feb-13	Mar-13	Apr-13	May-13	Jun-13	Jul-13	Aug-13	Sep-13	Oct-13	Nov-13	Dec-13
958	1104	1198	1451	1260	1715	1635	1747	2001	1819	2047	1851	2010	1946	1934