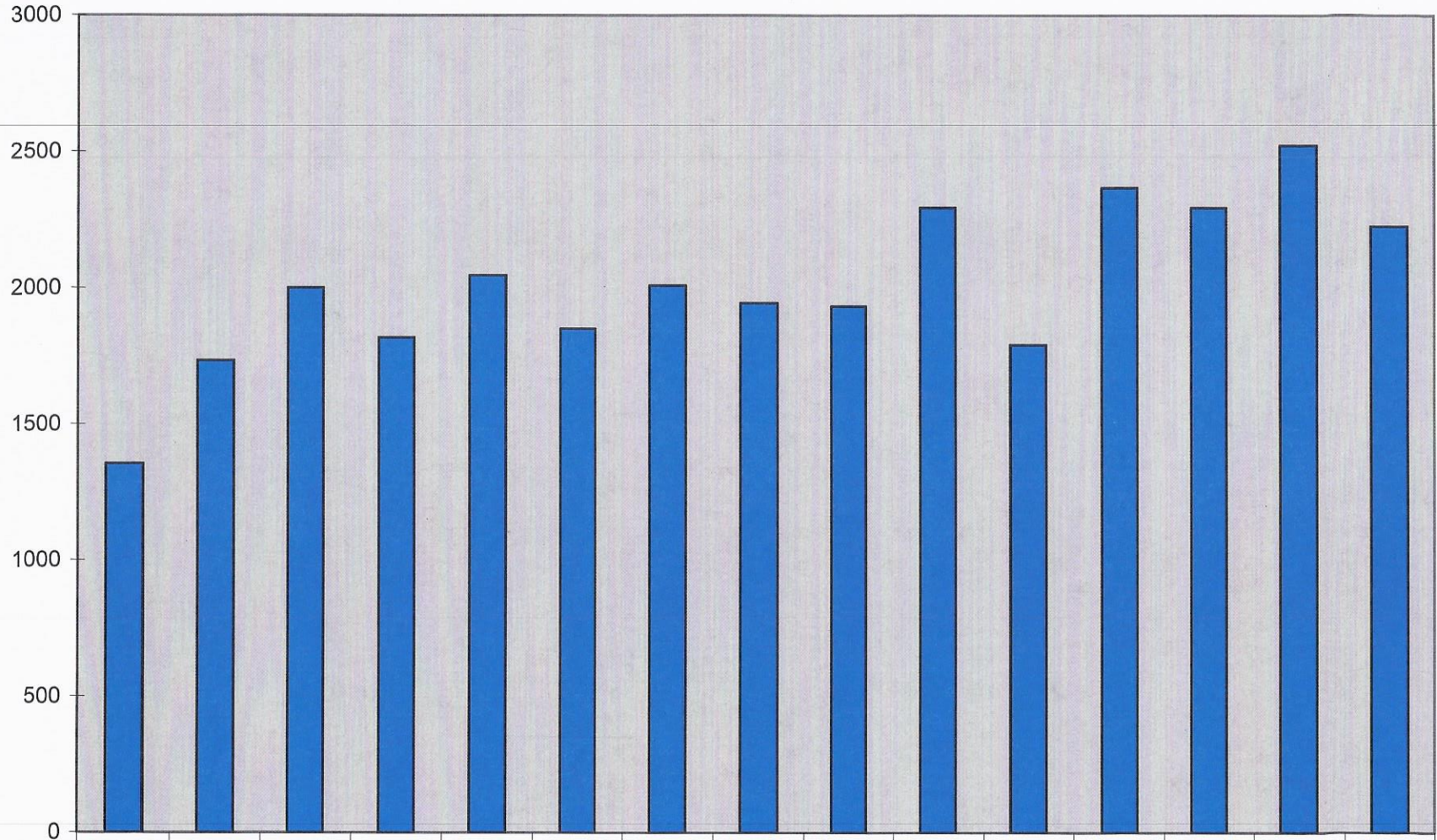


NUMBER OF INSPECTIONS



■ # of Insp

Jun-11	Jun-12	Jun-13	Jul-13	Aug-13	Sep-13	Oct-13	Nov-13	Dec-13	Jan-14	Feb-14	Mar-14	Apr-14	May-14	Jun-14
1354	1734	2001	1819	2047	1851	2010	1946	1934	2295	1792	2368	2295	2524	2227