

PERS 7 year projections - Costa Mesa
Valuations as of 6/30/13 and 6/30/14

Note: PERS Valuations assume "PERL Standard" Employee contributions

	2014-15	2015-16	2016-17	2017-18	2018-19	2019-20	2020-21	2021-22	Source
<u>Miscellaneous</u>									
Total Normal Cost	16.990%	16.864%	16.892%	16.892%	16.892%	16.892%	16.892%	16.892%	
Total Unfunded Cost	20.766%	23.827%	26.081%	28.250%	30.450%	32.650%	34.182%	33.750%	
TOTAL RATE	37.756%	40.691%	42.973%	45.14%	47.34%	49.54%	51.07%	50.64%	p4,20
<u>Police</u>									
Total Normal Cost	28.928%	28.806%	30.447%	30.447%	30.447%	30.447%	30.447%	30.447%	
Total Unfunded Cost	21.528%	26.785%	34.163%	38.453%	42.653%	46.953%	48.553%	49.453%	
TOTAL RATE	50.456%	55.591%	64.610%	68.90%	73.10%	77.40%	79.00%	79.90%	p4,20
<u>Fire</u>									
Total Normal Cost	29.113%	29.216%	30.217%	30.187%	30.187%	30.187%	30.187%	30.187%	
Total Unfunded Cost	27.324%	33.884%	38.472%	42.187%	45.903%	49.618%	52.288%	53.324%	
TOTAL RATE	56.437%	63.100%	68.689%	72.374%	76.090%	79.805%	82.475%	83.511%	p4,5
Projected Fire REC %	20.128%	20.230%	21.230%	21.200%	21.200%	21.200%	21.200%	21.200%	p4,5
Employee PERL%	8.985%	8.986%	8.987%	8.987%	8.987%	8.987%	8.987%	8.987%	p4,5
Projected Fire UAL \$	2,872,678	3,395,605	3,775,459	4,264,281	4,779,034	5,320,834	5,607,141	5,889,738	p4,5
Calculated Fire UAL %	27.324%	33.884%	38.472%	42.187%	45.903%	49.618%	52.288%	53.324%	
<u>Total Rates</u>									
MISCELLANEOUS	37.756%	40.691%	42.973%	45.142%	47.342%	49.542%	51.074%	50.642%	
POLICE	50.456%	55.591%	64.610%	68.900%	73.100%	77.400%	79.000%	79.900%	
FIRE	56.437%	63.100%	68.689%	72.374%	76.090%	79.805%	82.475%	83.511%	
<u>Payroll Base</u>									
		Payroll Growth:		3.0%	3.0%	3.0%	3.0%	3.0%	
Miscellaneous	21,418,822	20,696,438	20,699,956	21,320,955	21,960,584	22,619,402	22,619,402	23,297,984	
Police	18,133,294	16,348,321	14,598,407	15,036,359	15,487,450	15,952,074	15,952,074	16,430,636	
Fire	10,513,535	10,021,248	9,813,523	10,107,929	10,411,167	10,723,502	10,723,502	11,045,207	
TOTAL	50,065,651	47,066,007	45,111,886	46,465,243	47,859,201	49,294,978	49,294,978	50,773,827	

**PERS 7 year projections - Costa Mesa
Valuations as of 6/30/13 and 6/30/14**

Note: PERS Valuations assume "PERL Standard" Employee contributions

<u>Total Contributions</u>	2014-15	2015-16	2016-17	2017-18	2018-19	2019-20	2020-21	2021-22
MISCELLANEOUS	8,086,890	8,421,588	8,895,392	9,624,706	10,396,580	11,206,104	11,552,679	11,798,565
POLICE	9,149,335	9,088,195	9,432,031	10,360,051	11,321,326	12,346,905	12,602,138	13,128,078
FIRE	5,933,483	6,323,413	6,740,811	7,315,562	7,921,853	8,557,938	8,844,245	9,223,955
TOTAL	23,169,708	23,833,196	25,068,234	27,300,319	29,639,759	32,110,947	32,999,062	34,150,598

<u>Unfunded Liability</u>	6/30/12	6/30/13	6/30/14	6/30/15 Fcst	6/30/16 Fcst
MISCELLANEOUS	83,960,536	78,789,261	74,624,126	76,000,115	76,741,112
POLICE	83,627,245	82,006,287	86,296,243	89,913,759	92,955,007
FIRE	60,650,648	56,521,995	54,747,581	55,243,364	55,950,966
TOTAL	228,238,429	217,317,543	215,667,950	221,157,238	225,647,085

p14
p14
p8

<u>Active Employees</u>	6/30/13	6/30/14
MISCELLANEOUS	273	281
POLICE	122	108
FIRE	74	71
TOTAL	469	460

p C-1
p C-1
p15

<u>UL per Active Employee</u>	6/30/13	6/30/14	6/30/15	6/30/16
MISCELLANEOUS	288,605	273,348	278,389	281,103
POLICE	672,183	707,346	736,998	761,926
FIRE	763,811	739,832	746,532	756,094

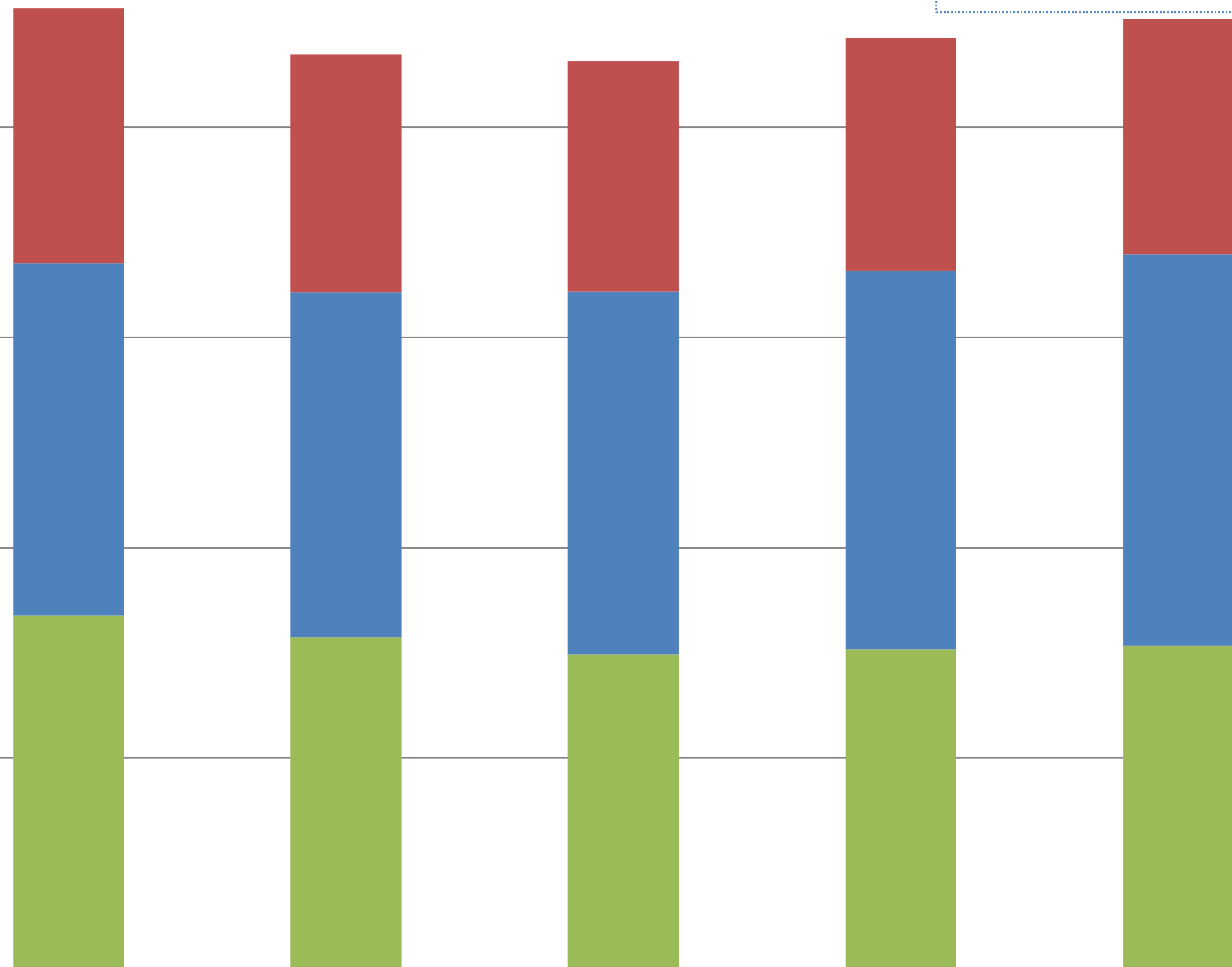
Total Contributions per Active Employee

	2014-15	2015-16	2016-17	2017-18	2018-19	2019-20	2020-21	2021-22
MISCELLANEOUS	28,779	29,970	31,656	34,252	36,999	39,879	41,113	41,988
POLICE	84,716	84,150	87,334	95,926	104,827	114,323	116,686	121,556
FIRE	83,570	89,062	94,941	103,036	111,575	120,534	124,567	129,915
TOTAL	197,065	203,182	213,931	233,214	253,401	274,737	282,366	293,459
WEIGHTED AVERAGE	51,975	53,387	56,125	61,148	66,410	71,970	73,939	76,559

Costa Mesa Unfunded Pension Liability

*Source: 6/30/13 & 14
PERS Valuations*

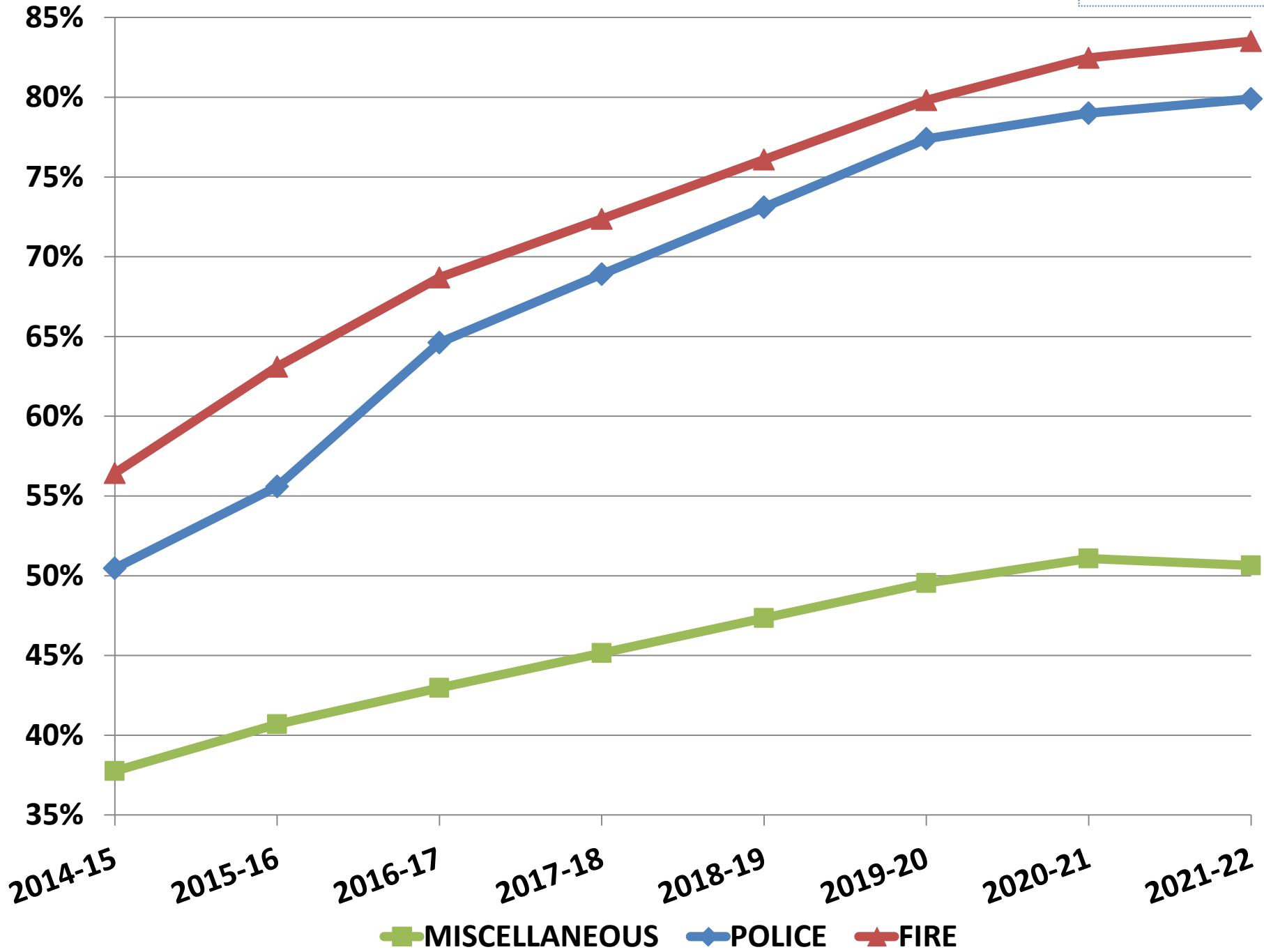
\$250,000,000
\$200,000,000
\$150,000,000
\$100,000,000
\$50,000,000
\$0



	6/30/12	6/30/13	6/30/14	6/30/15 Fcst	6/30/16 Fcst
FIRE	60,650,648	56,521,995	54,747,581	55,243,364	55,950,966
POLICE	83,627,245	82,006,287	86,296,243	89,913,759	92,955,007
MISCELLANEOUS	83,960,536	78,789,261	74,624,126	76,000,115	76,741,112

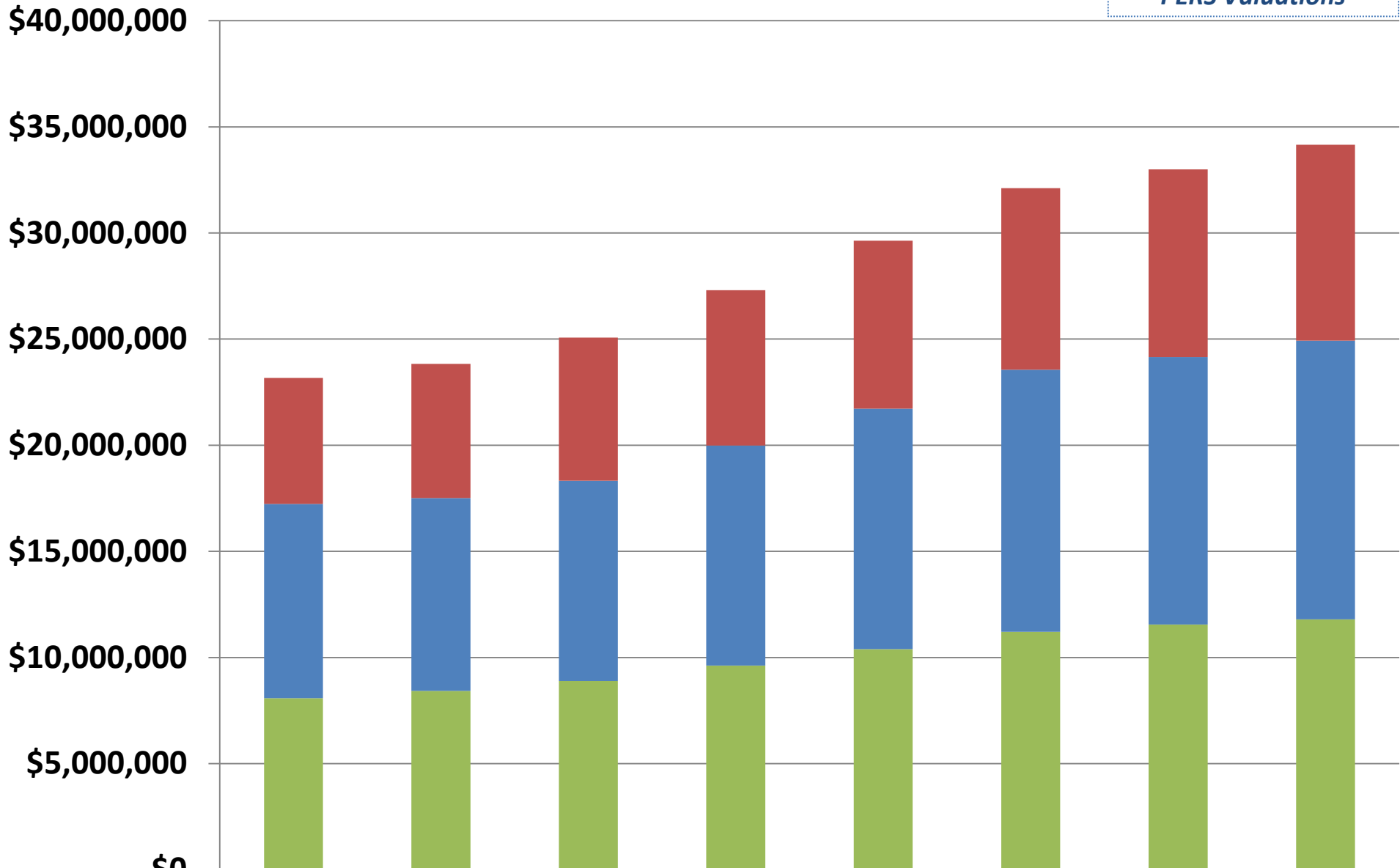
Costa Mesa's TOTAL PERS Contribution Rates

Source: 6/30/13 & 14
PERS Valuations



Costa Mesa TOTAL PERS Contributions

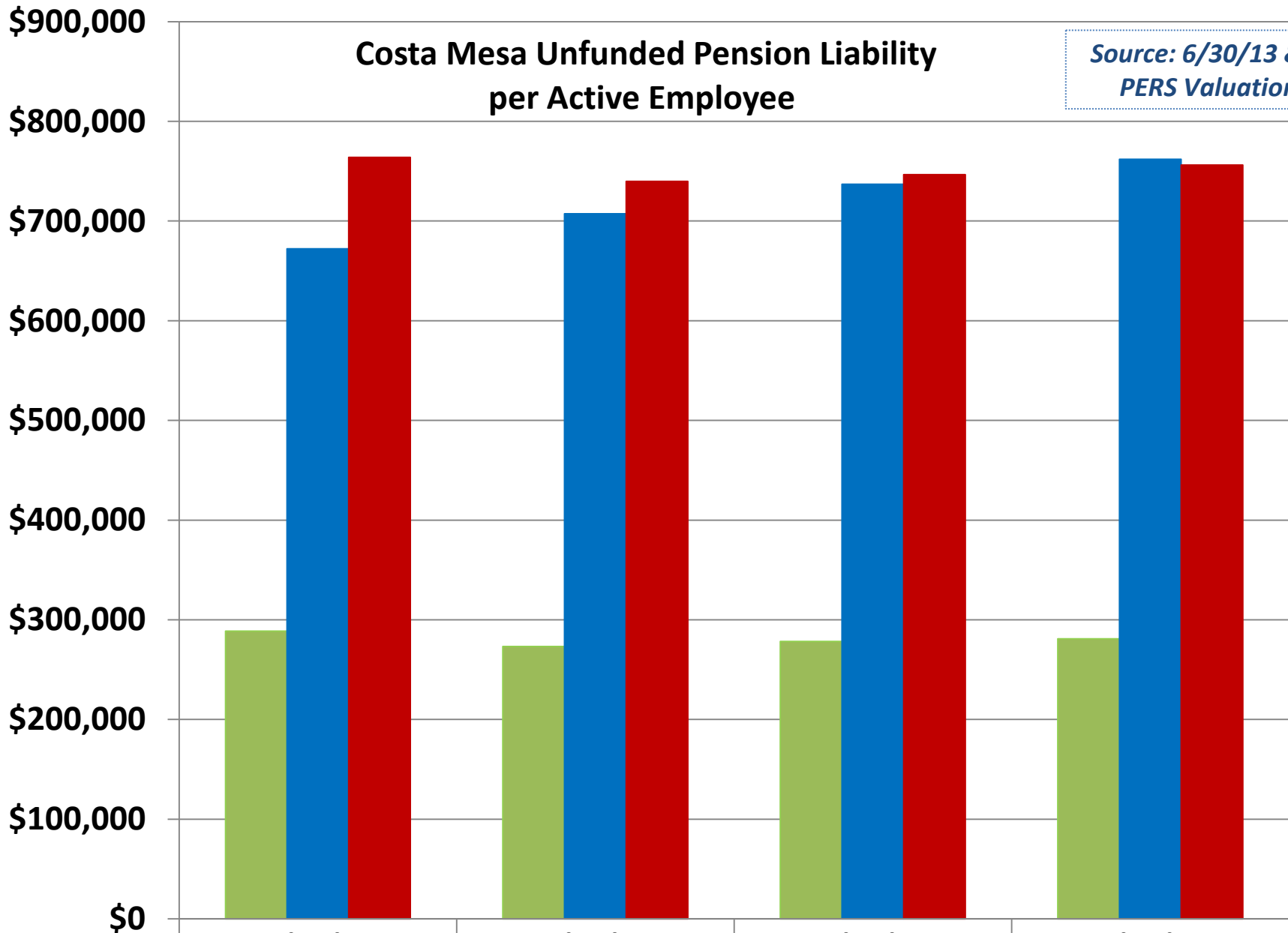
*Source: 6/30/13 & 14
PERS Valuations*



	2014-15	2015-16	2016-17	2017-18	2018-19	2019-20	2020-21	2021-22
■ FIRE	5,933,483	6,323,413	6,740,811	7,315,562	7,921,853	8,557,938	8,844,245	9,223,955
■ POLICE	9,149,335	9,088,195	9,432,031	10,360,051	11,321,326	12,346,905	12,602,138	13,128,078
■ MISCELLANEOUS	8,086,890	8,421,588	8,895,392	9,624,706	10,396,580	11,206,104	11,552,679	11,798,565

Costa Mesa Unfunded Pension Liability per Active Employee

*Source: 6/30/13 & 14
PERS Valuations*

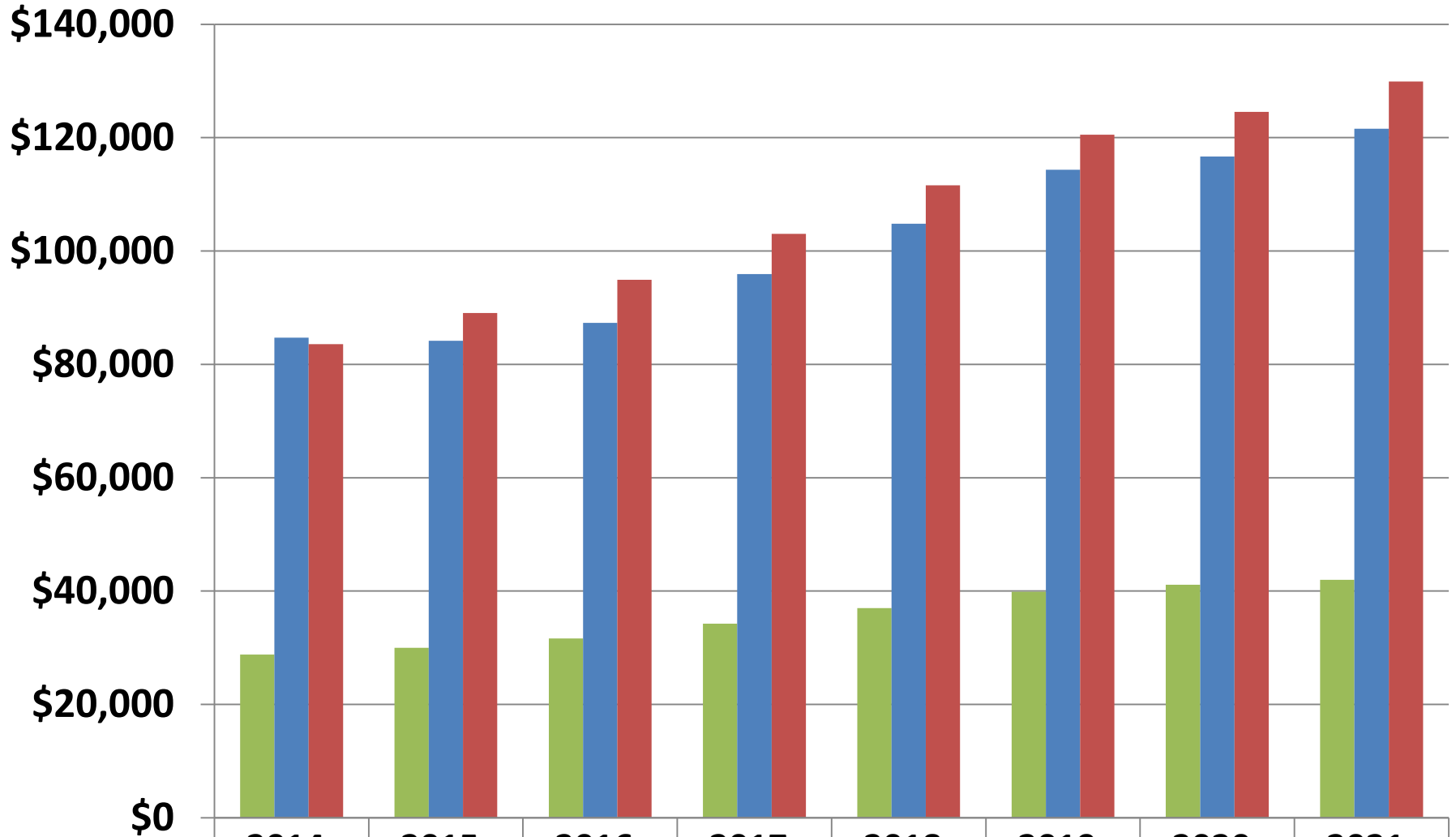


■ MISCELLANEOUS
■ POLICE
■ FIRE

	6/30/13	6/30/14	6/30/15	6/30/16
MISCELLANEOUS	288,605	273,348	278,389	281,103
POLICE	672,183	707,346	736,998	761,926
FIRE	763,811	739,832	746,532	756,094

Costa Mesa - Total Annual PERS Contributions per Active Employee

*Source: 6/30/13 & 14
PERS Valuations*



	2014-15	2015-16	2016-17	2017-18	2018-19	2019-20	2020-21	2021-22
■ MISCELLANEOUS	28,779	29,970	31,656	34,252	36,999	39,879	41,113	41,988
■ POLICE	84,716	84,150	87,334	95,926	104,827	114,323	116,686	121,556
■ FIRE	83,570	89,062	94,941	103,036	111,575	120,534	124,567	129,915