



Costa Mesa Voting District Formation

Welcome

Thursday, June 2, 2016

7:00 p.m. to 9:00 p.m.

Neighborhood Community
Center 1845 Park Avenue
Costa Mesa, CA 92627

Saturday, June 4, 2016

10:00 a.m. to 12:00 p.m.

Halecrest Park
3107 Killybrooke Lane
Costa Mesa, CA 92626





Purpose of Today's Meeting

- City of Costa Mesa's Voting Districts Formation (VDF)
 - Background & Overview
- Guiding Principles
- Process and Timeline
- Criteria, Considerations and Sample Maps
- Next Steps
- Group Exercise to Gather Community Input
- Questions & Answers



VDF Background & Overview



- City of Costa Mesa's at-large voting structure
 - 5-council seats, mayor rotation system
- District Based Elections
 - Ensure compliance with Voting Rights Act
 - Council representatives to be voted by and from geographically defined districts
 - Council representatives would serve for a four-year term



VDF Guiding Principles



- Process will be transparent and inform/engage all stakeholders.
- Public input focus on formation of five voting districts in compliance with laws.
- All input considered with respect for differing opinions.
- Near equal population is primary factor; also, topography, geography, communities of interest, and significant and sensitive land uses; where council members reside is also legally permissible to consider.
- Minority communities should not be diluted.
- City Council will approve districts/number designation.



VDF Process and Anticipated Schedule



Parallel Technical and Community Participation Processes

- Technical Process (April 2016 thru May 2016)
 - Demographic Analysis (specific criteria including: population, topography, geography, communities of interest, etc.)
 - Formation of nearly equal population districts
- Community Participation (May 2016 thru June 2016)
 - May 2016 - Meet the Expert meetings
 - Early June 2016 – Community meetings, Round 1
 - Late June 2016 – Round 2 Meet the Expert and Community meetings
 - July 5, 2016 – City Council public hearing to receive public input on proposed maps
- August 2, 2016– Present final analysis with recommendation for voting districts to City Council and adopt Voting Districts



Criteria



Federal Requirement	
1 Equal Population	As equal as practical based on data and Criteria Based on most recent Census Total Population
2 Minority Voting Rights	No Discriminatory Purpose No Vote Dilution: Narrowly Tailored
3 Equal Protection	Race must not Predominate
State Law	
a Topography	
b Geography	
c Cohesiveness, contiguity, integrity, and compactness of territory	
d Community of Interest	



General Districting Considerations



- Legal Requirements
- Geography
 - Neighborhoods
 - Physical Layout
 - School Districts and Other Areas
- Political Participation
 - Voter Registration
 - Voter Turnout
 - Ethnic Shares
- Demographic Characteristics
 - Population by Ethnicity
 - Voting Age Population by Ethnicity
 - Citizen Voting Age by Ethnicity
- Socio-Economic Characteristics
 - Income
 - Home Ownership
 - Age of Housing
 - Length of Residence
- Public Input



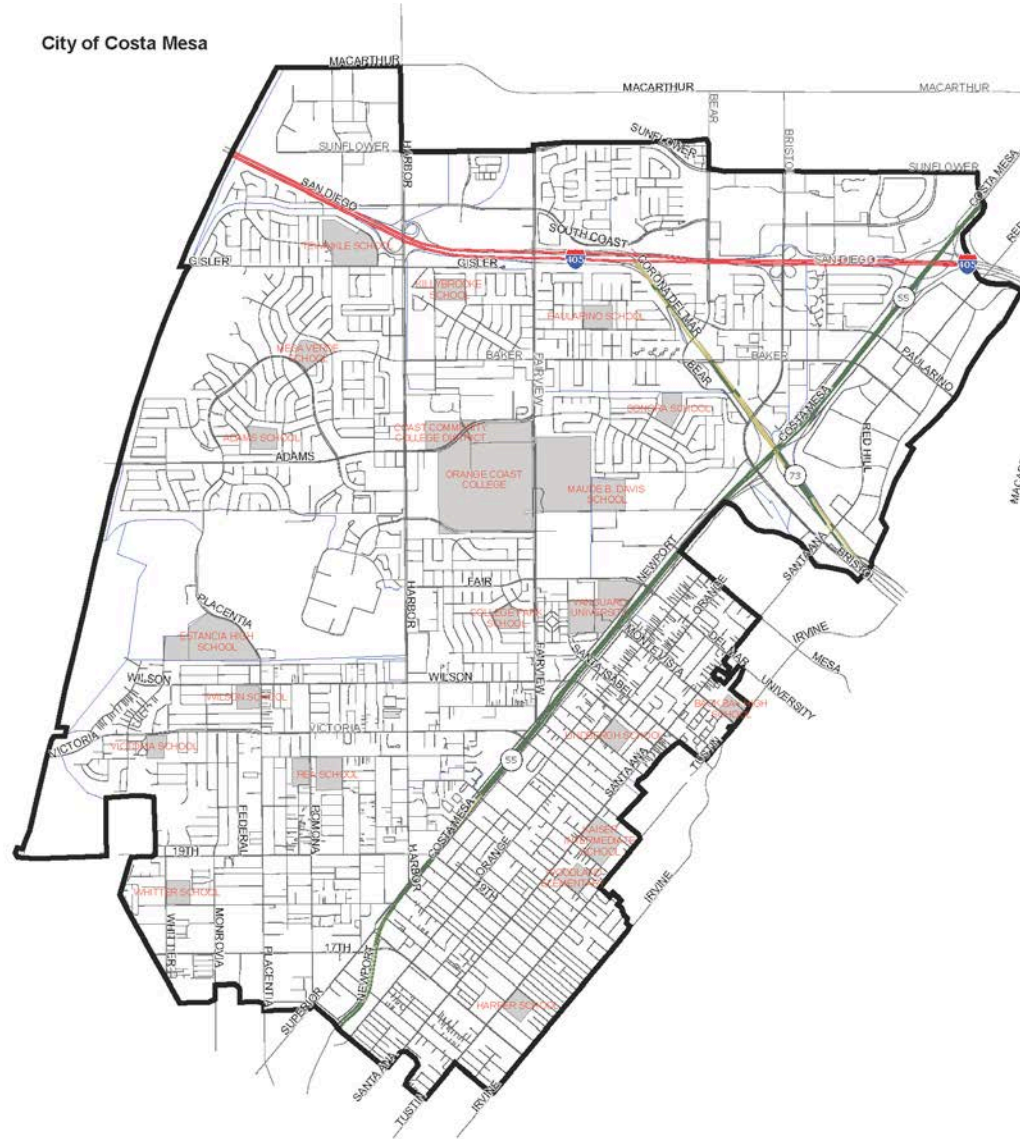
Geographic Data



- Streets and Highways
- Census Tracts and Blocks
- Precincts
- Parcels
- City GIS Layers
- School District Boundaries
- Attendance Areas



Base Map

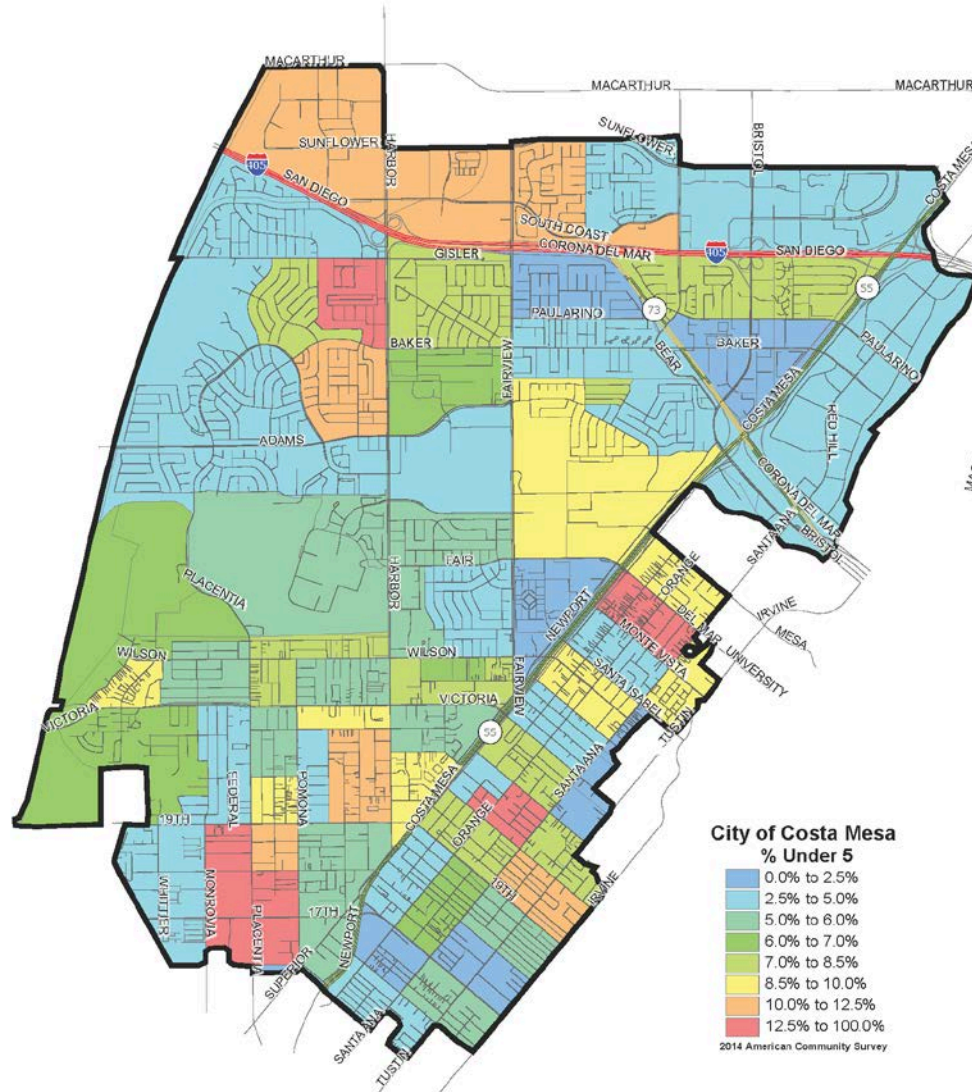




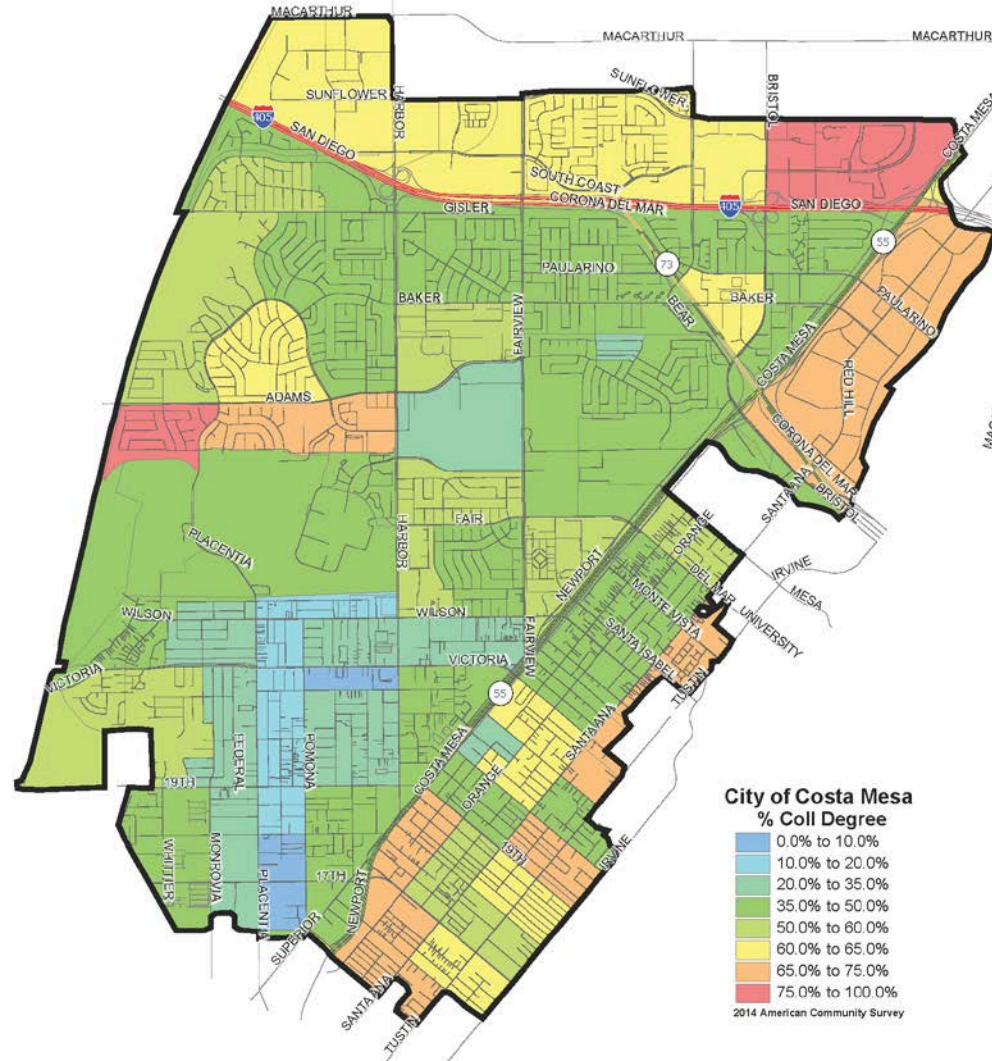
Thematic Maps



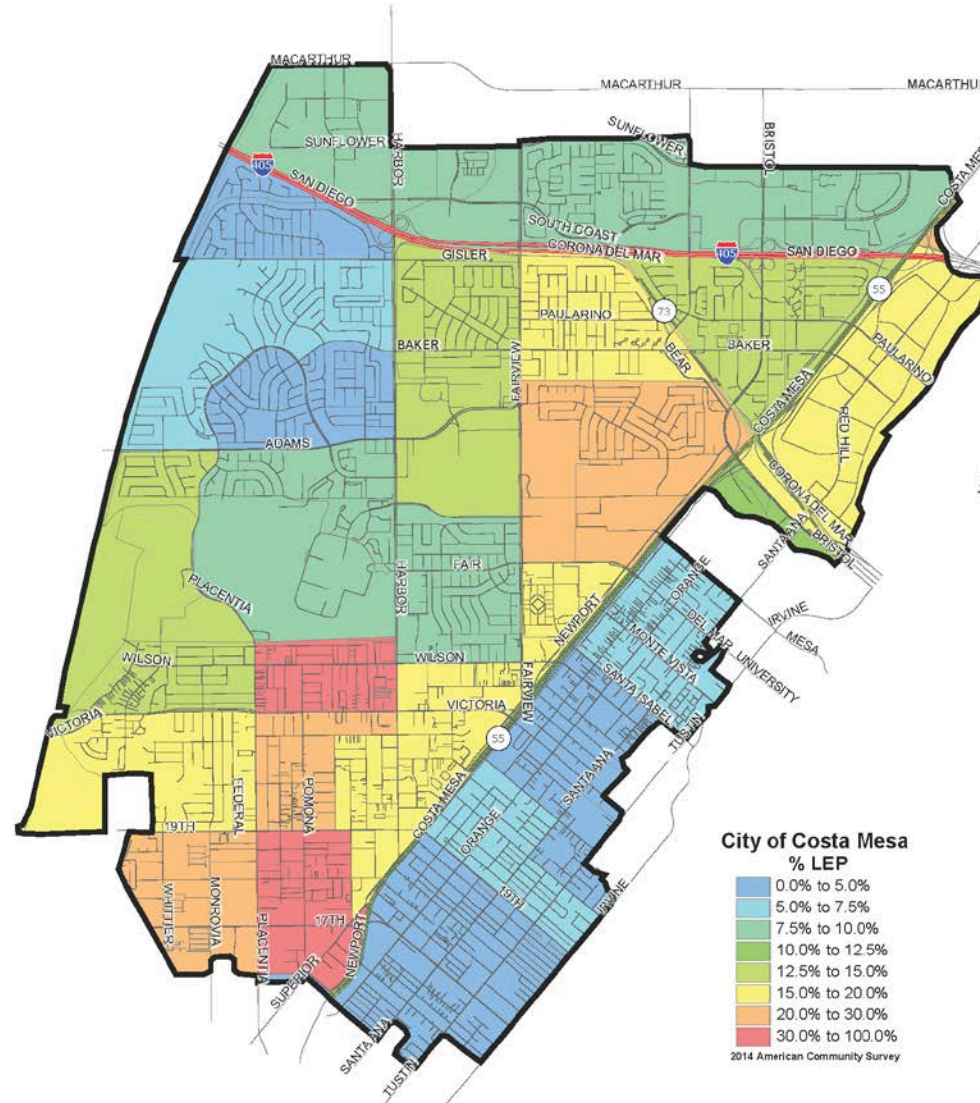
Age 5 & Under



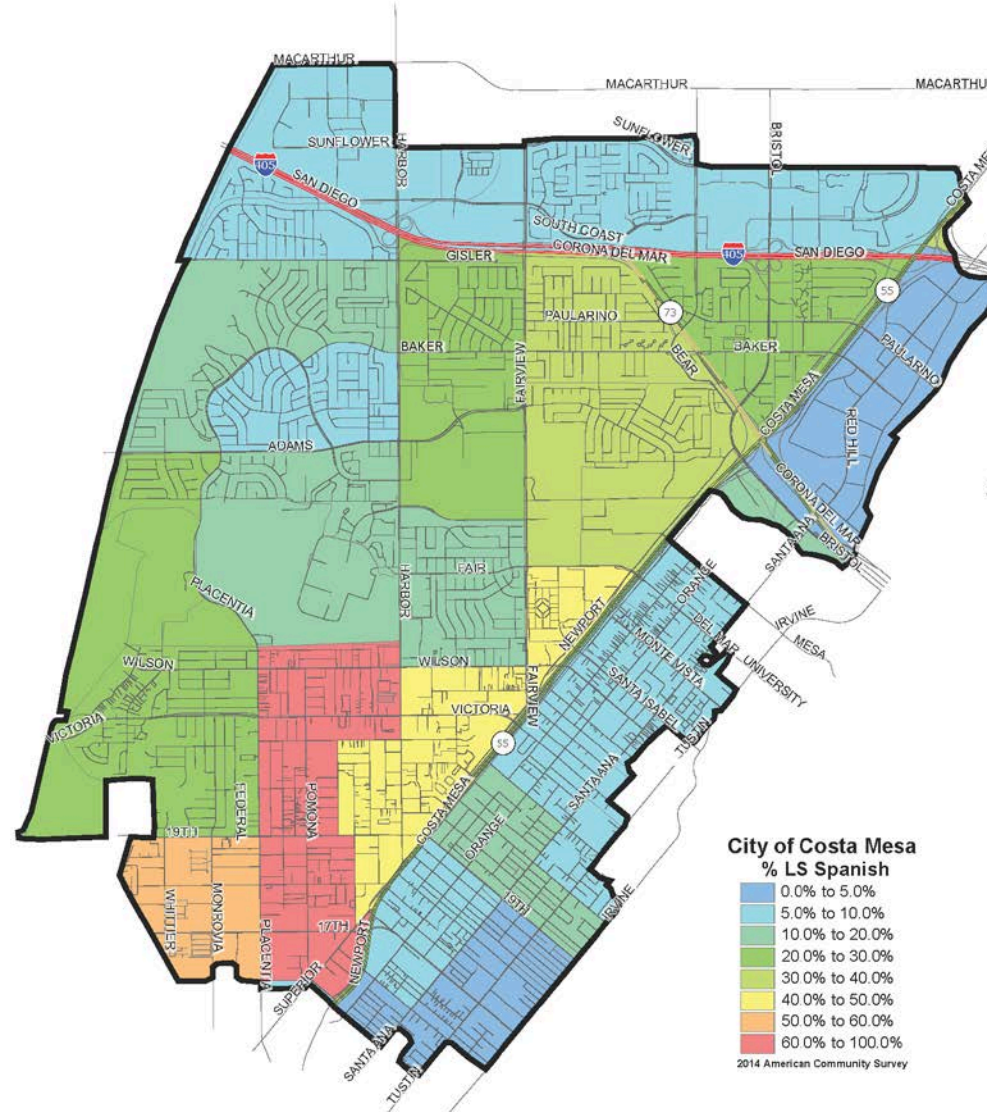
College Degree



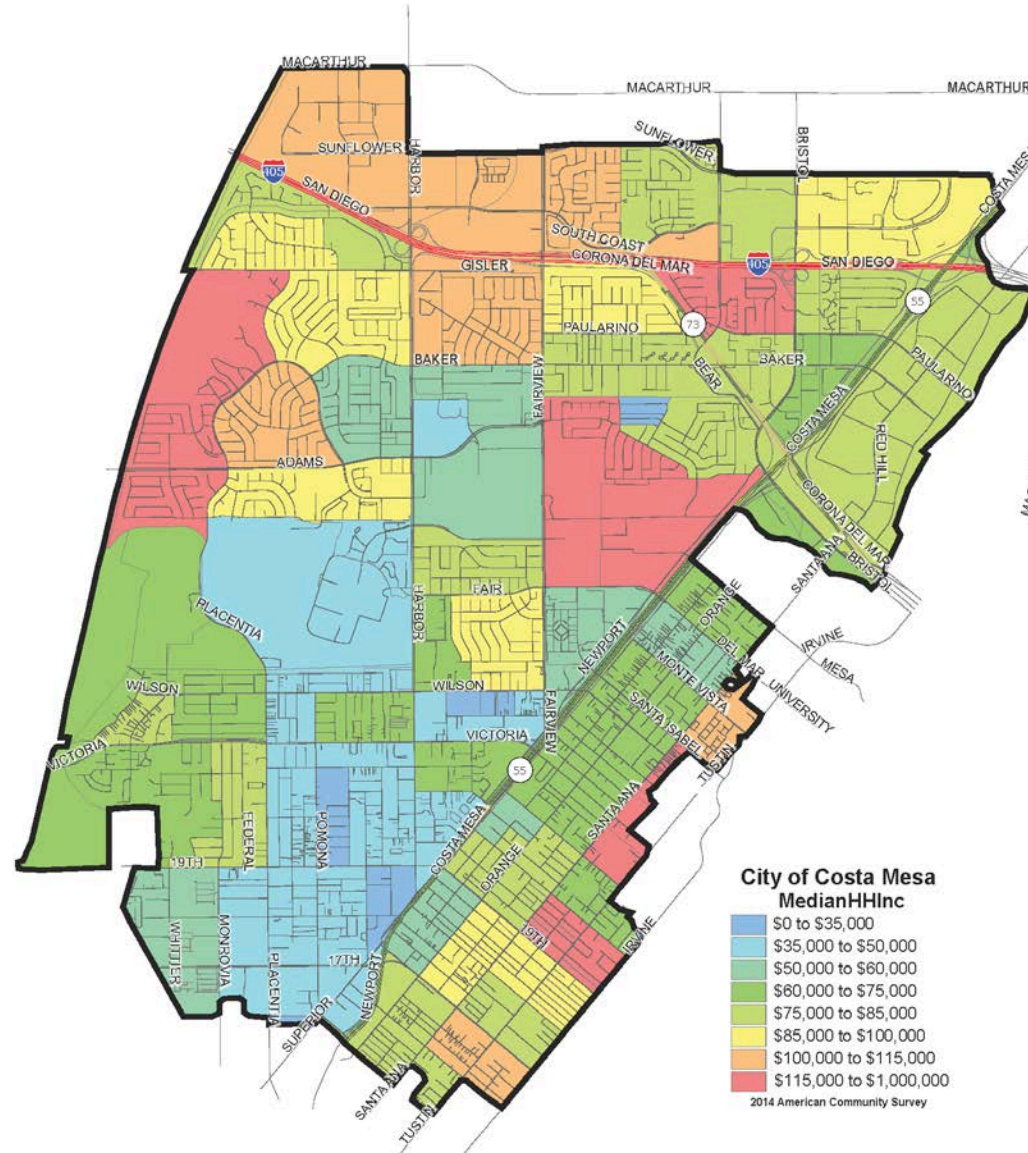
Limited English Proficiency



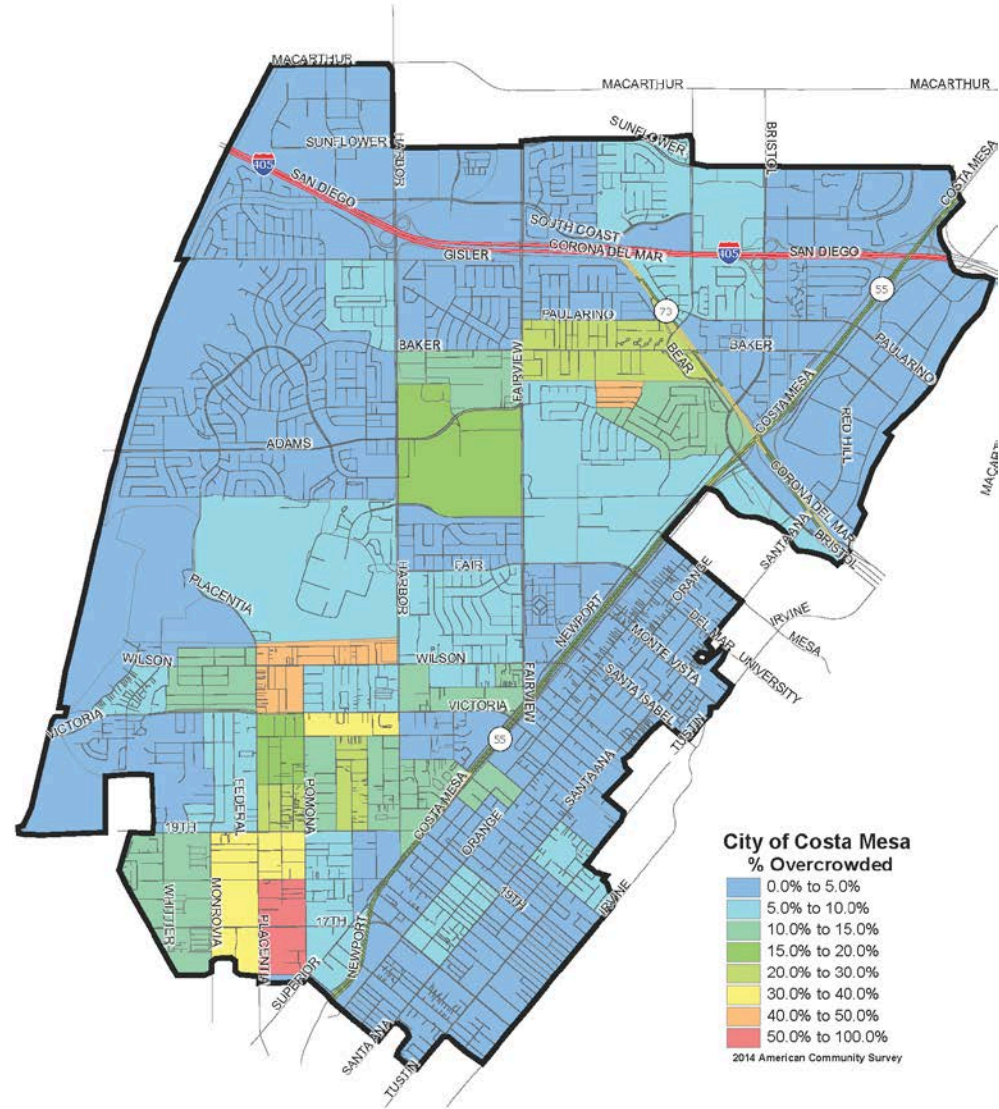
Speak Spanish at Home



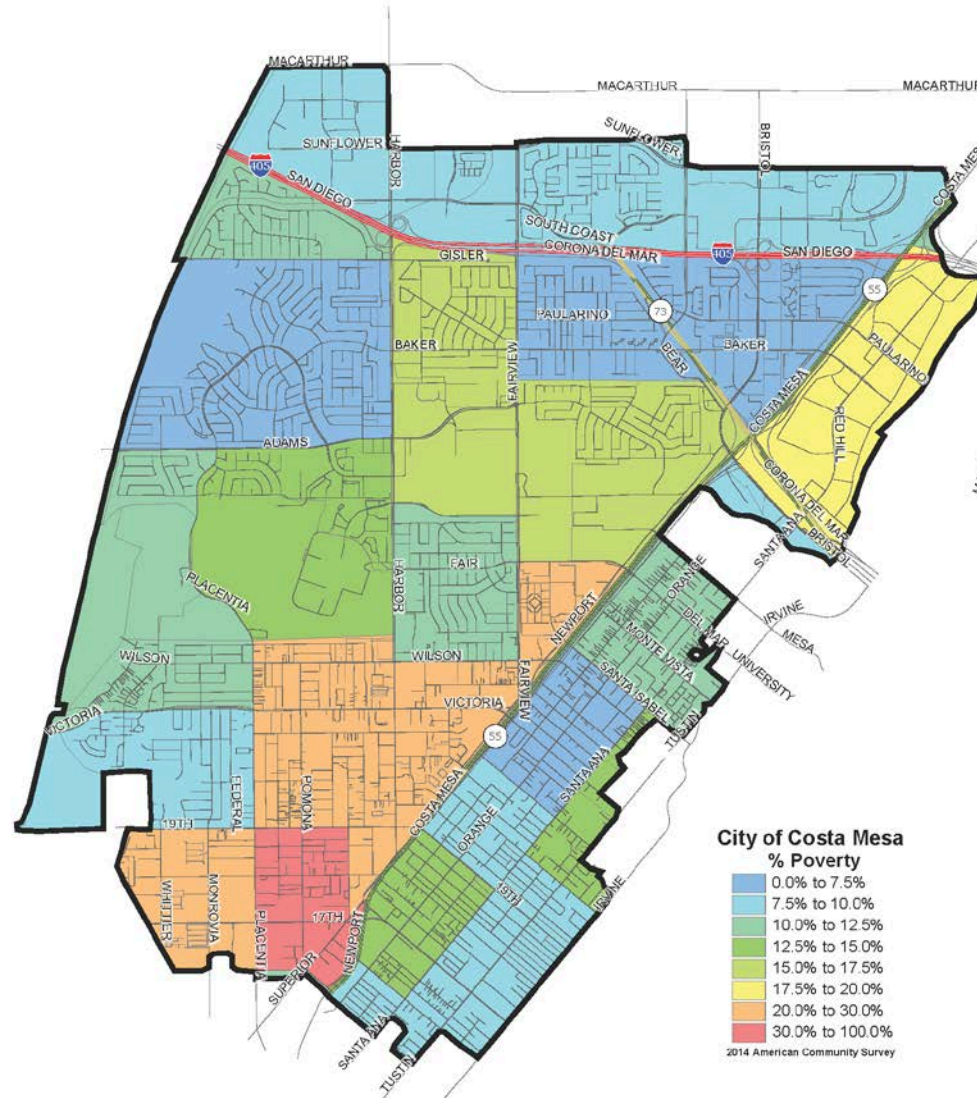
Median Household Income



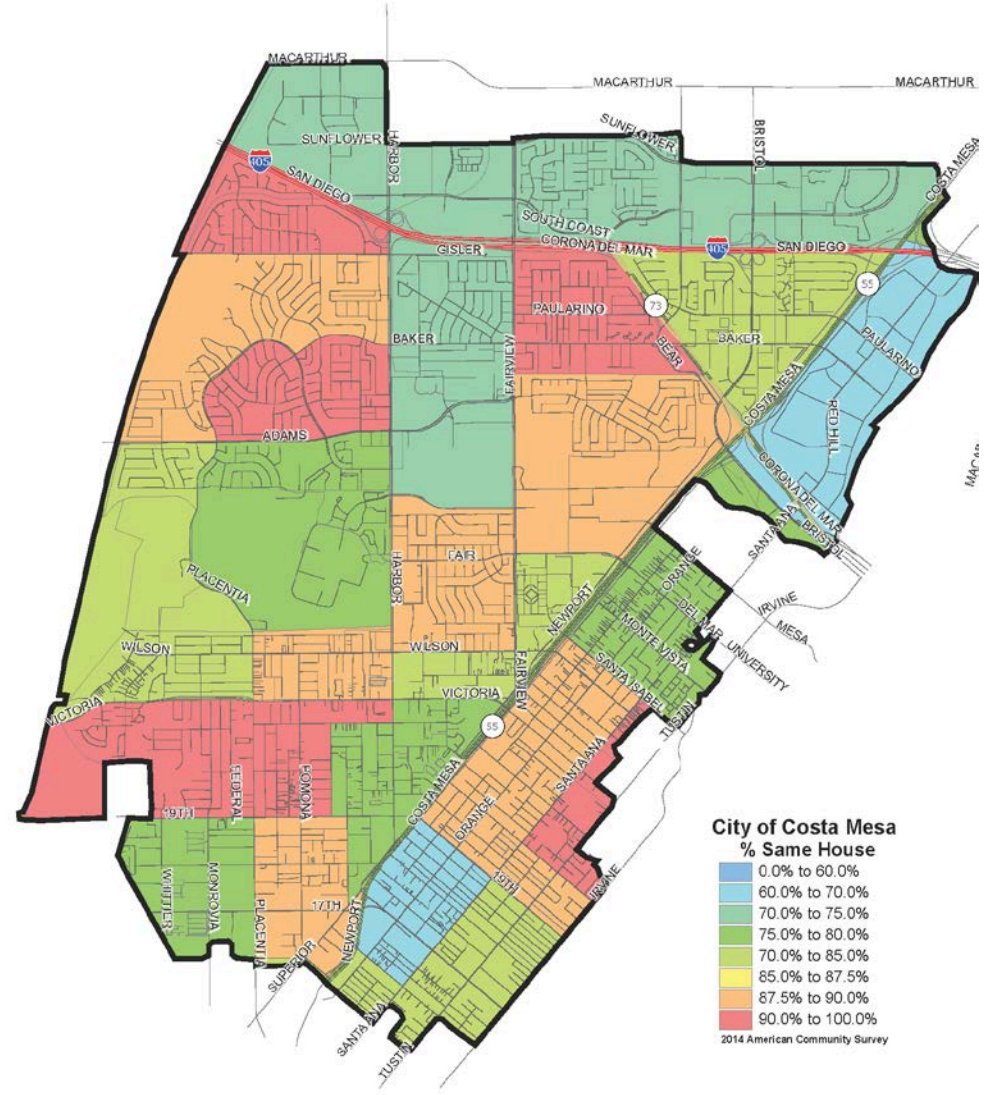
Overcrowded Housing Units



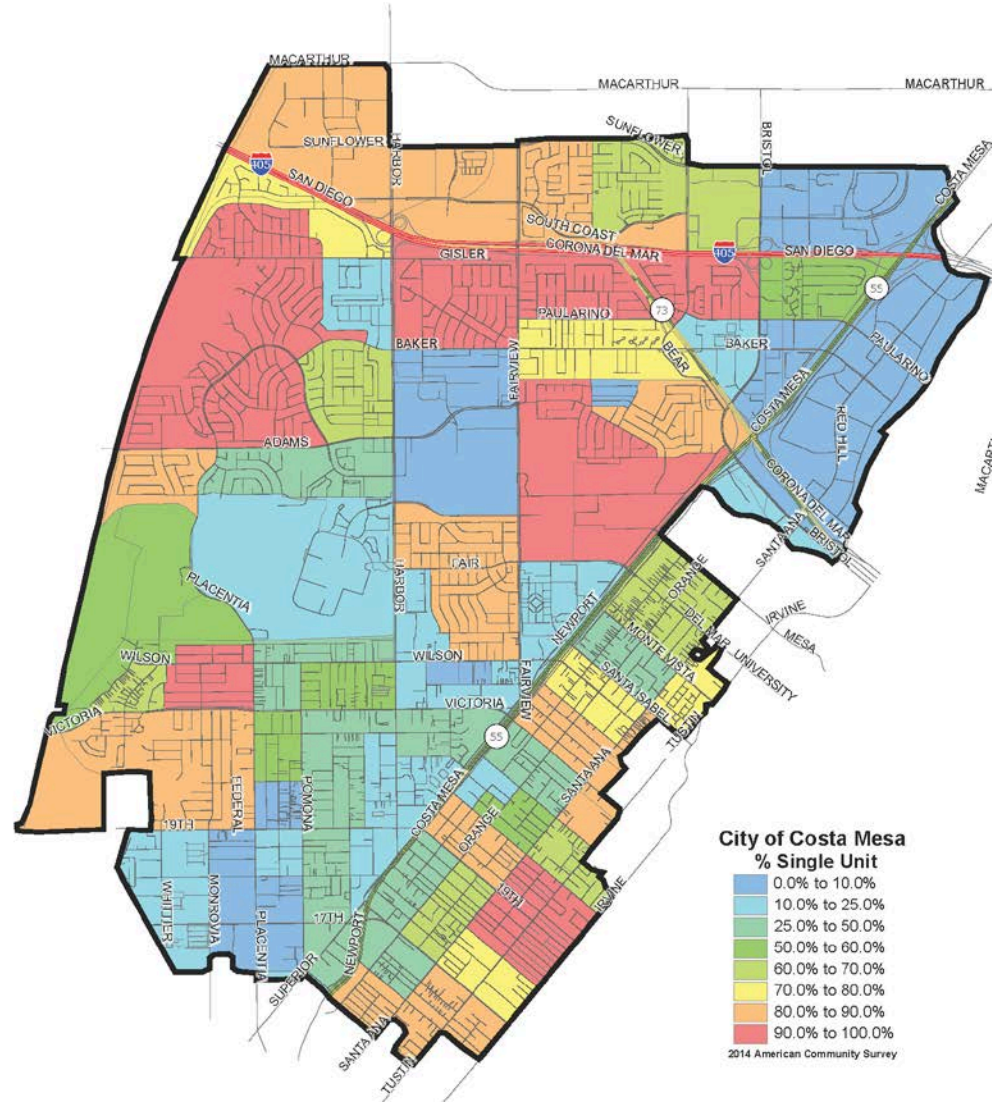
Poverty Rate



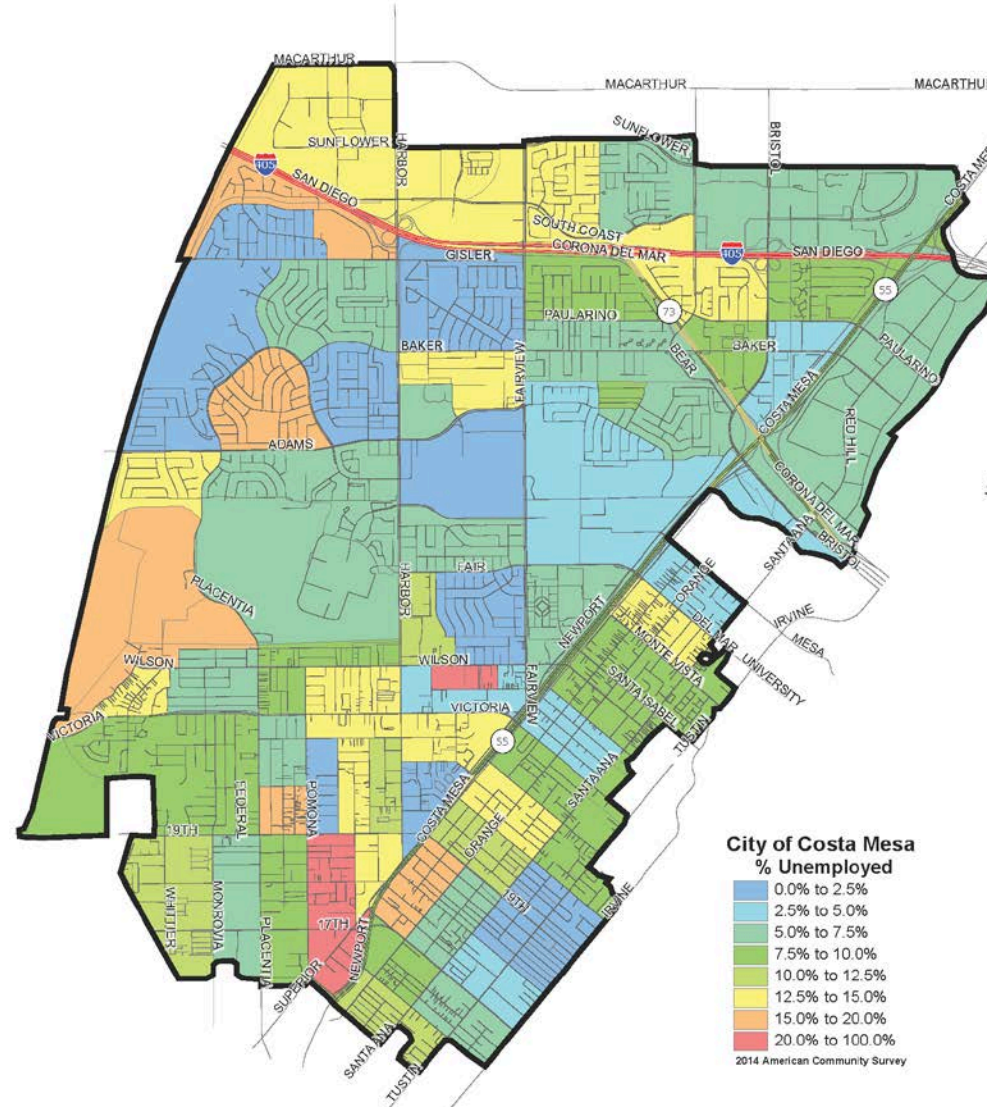
Same House



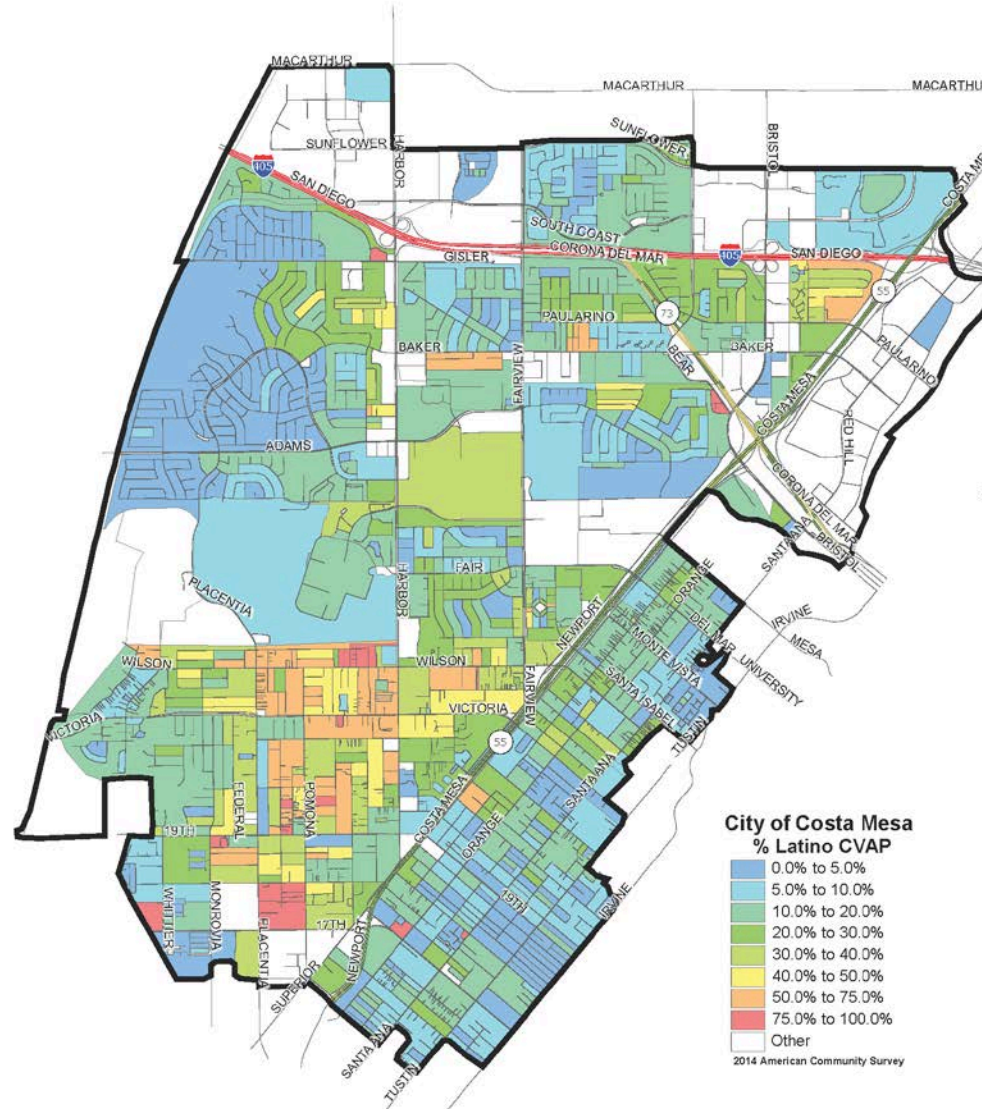
Single Unit Housing Structure



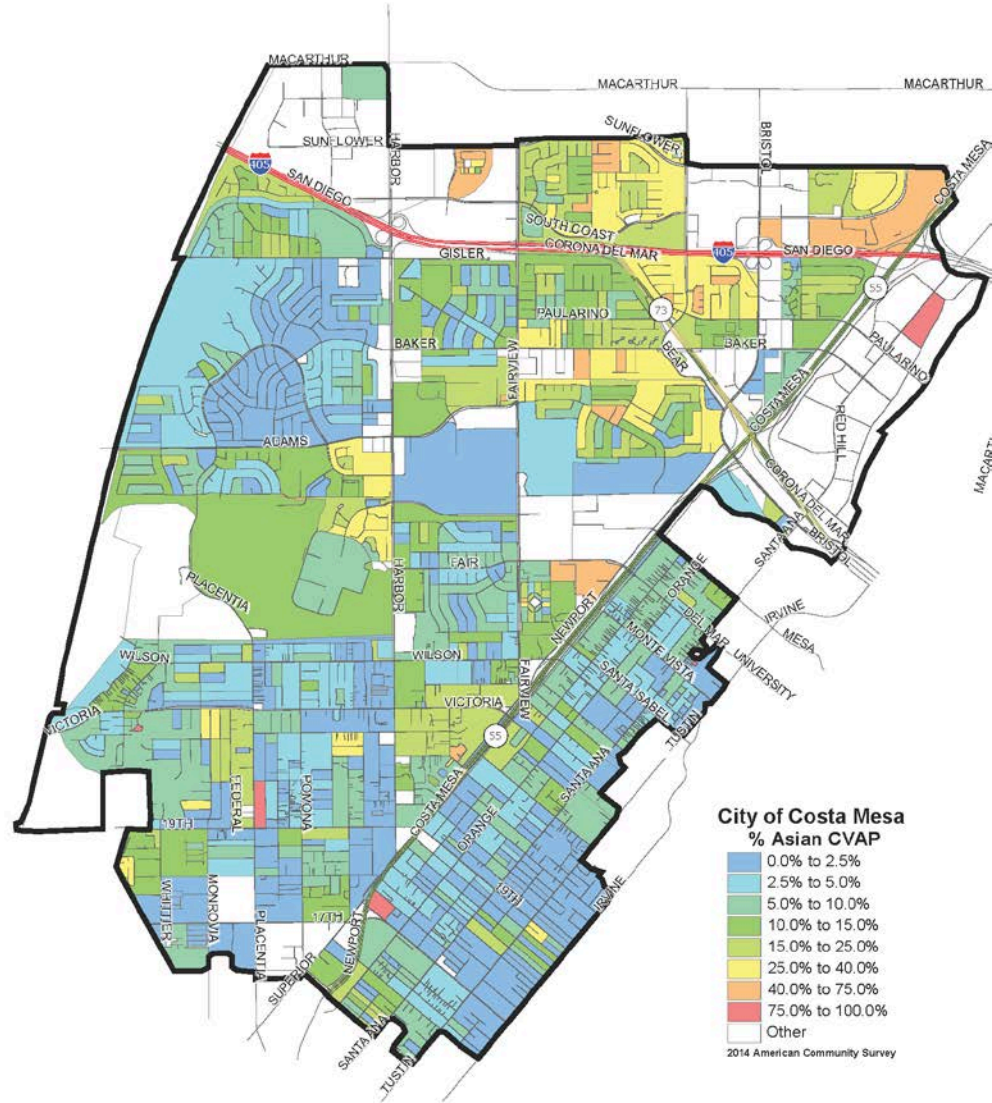
Unemployment Rate



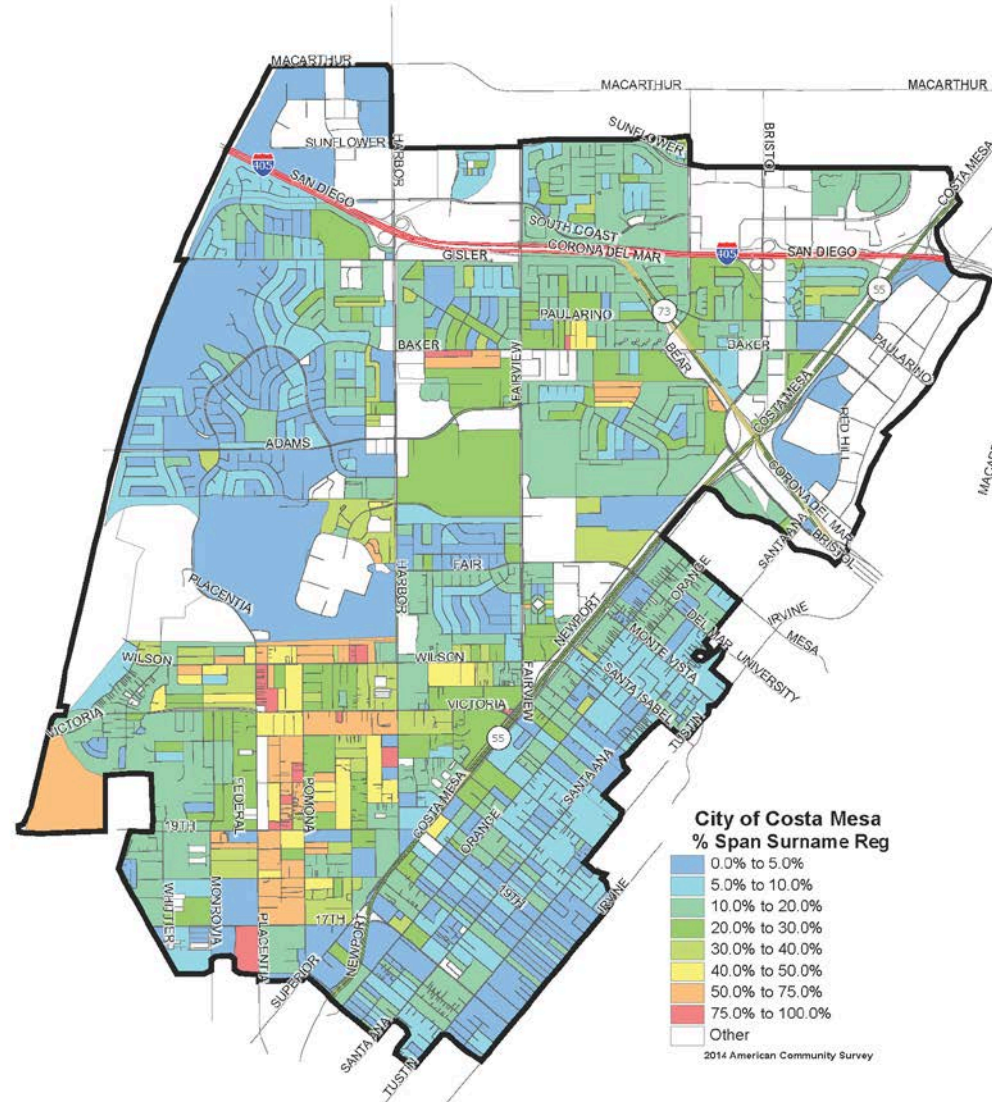
Latino CVAP



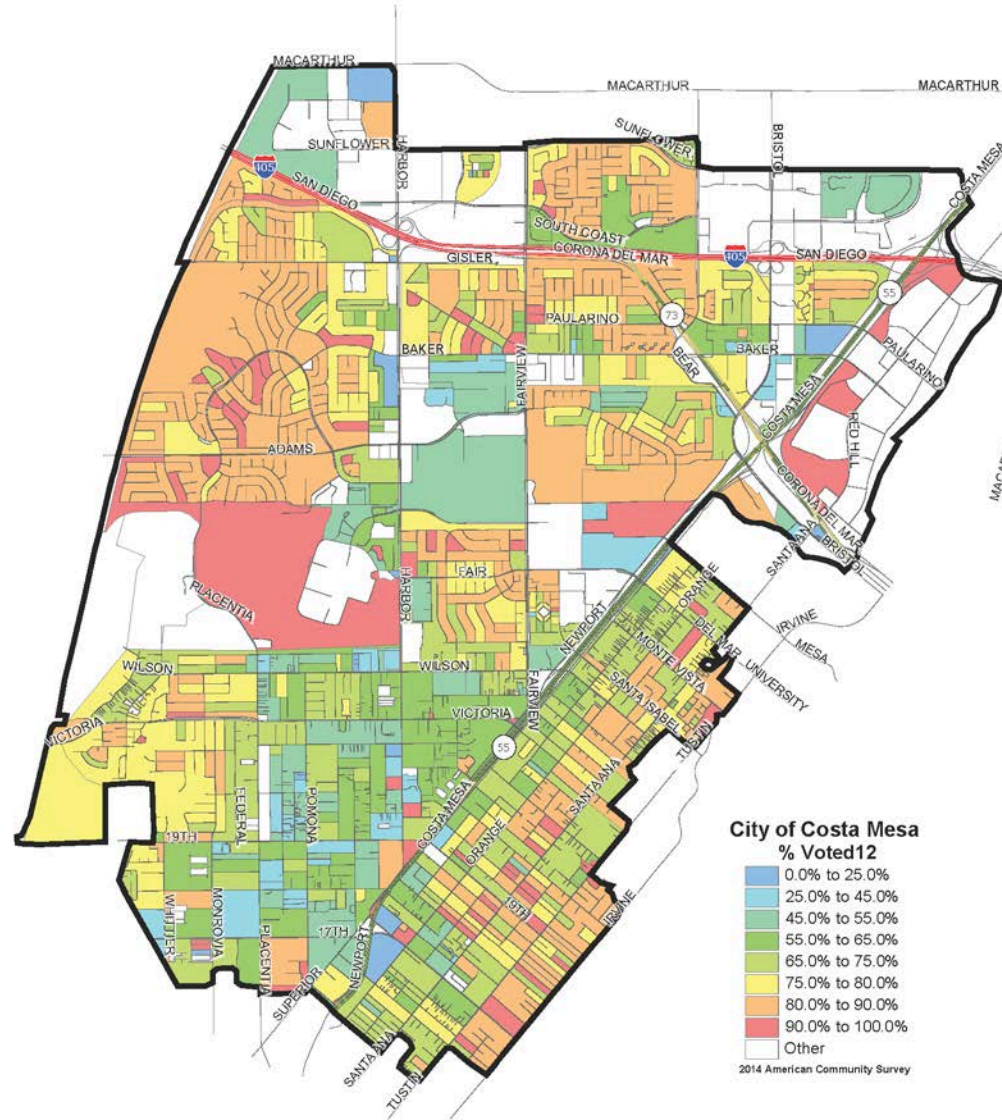
Asian CVAP



Spanish Surname Registration



Turnout 2012

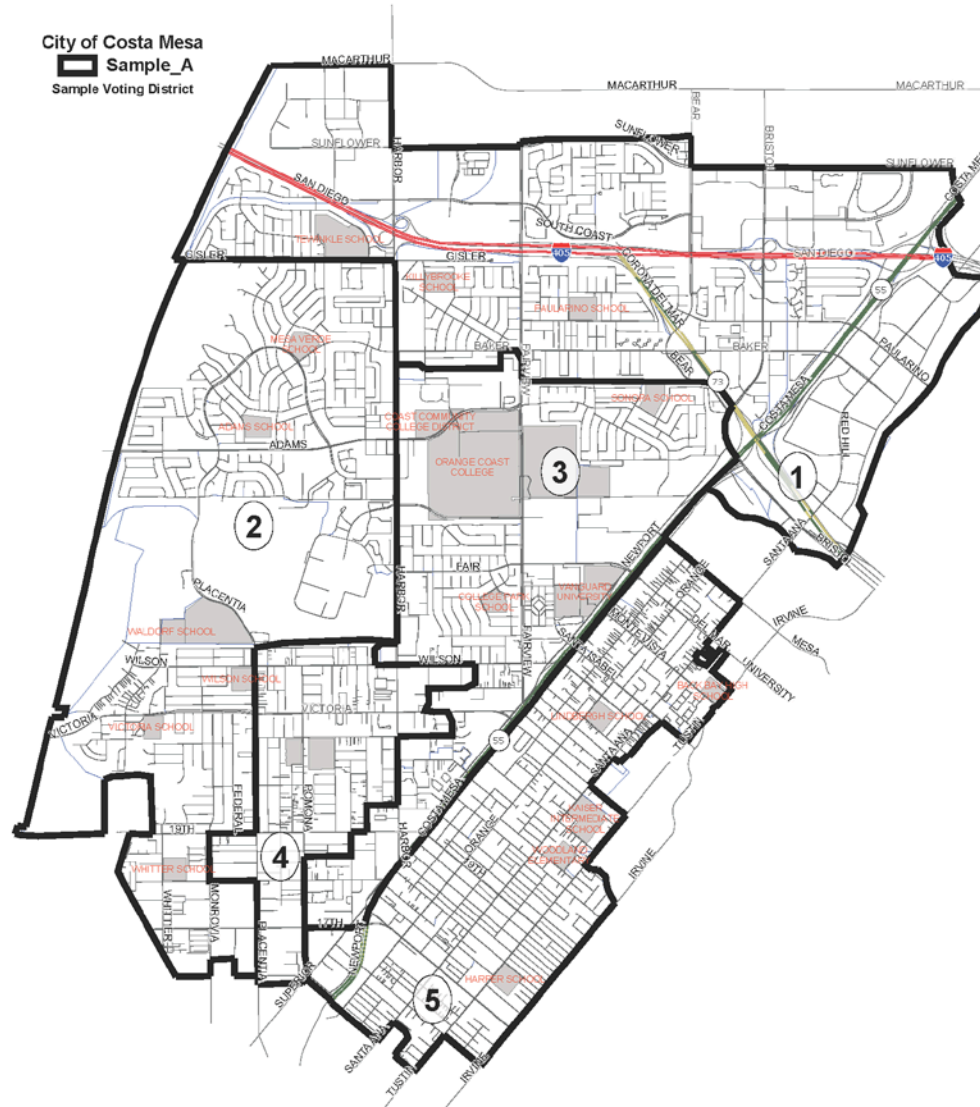




Sample Maps



Sample A

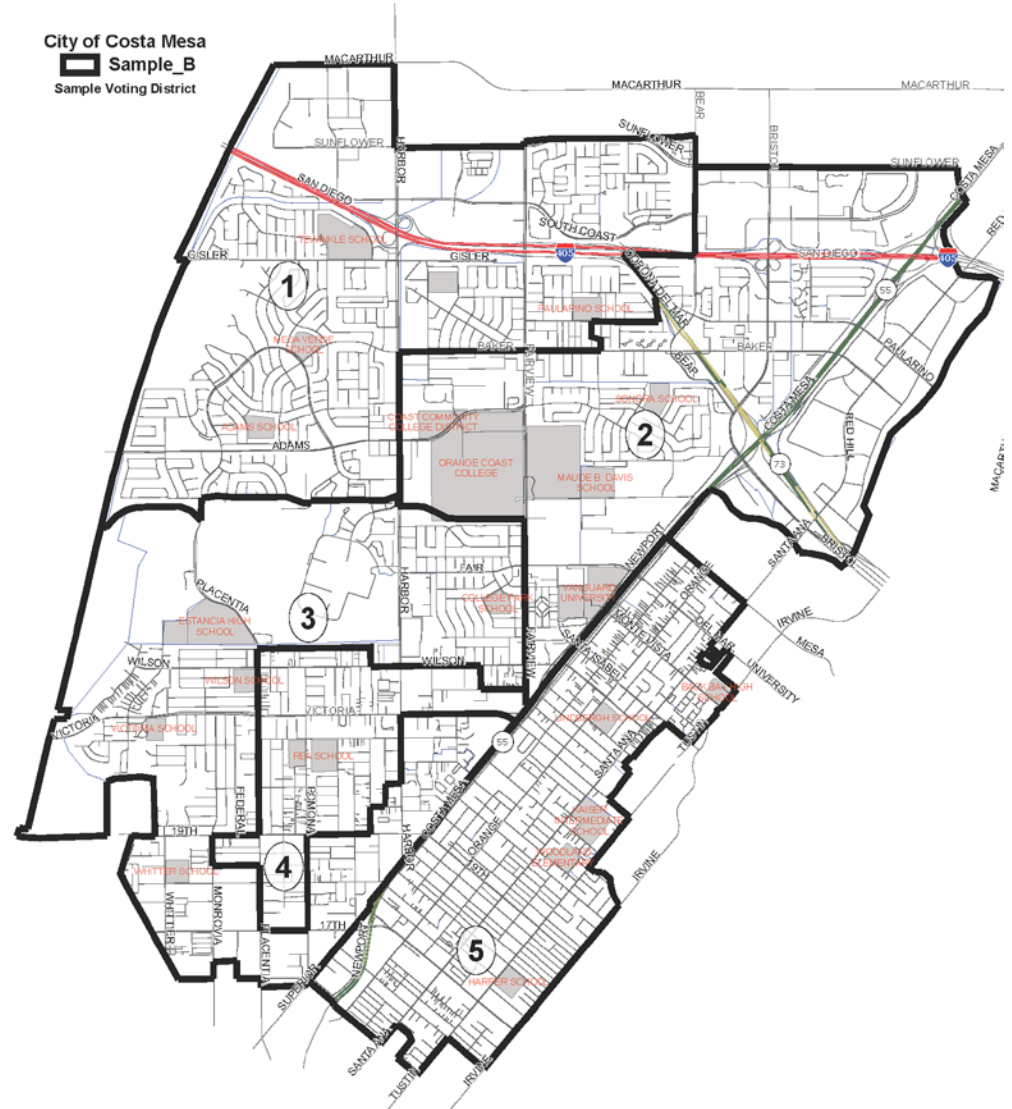


Sample A



District	City Total	Sample A				
		1	2	3	4	5
Population	110106	21828	21252	22447	22685	21894
Deviation		-193	-769	426	664	-127
% Deviation		-0.9%	-3.5%	1.9%	3.0%	-0.6%
Latino	35.8%	24.5%	25.6%	34.9%	77.6%	14.6%
White	51.9%	52.7%	63.3%	50.2%	17.3%	77.6%
Black	1.5%	2.2%	1.7%	2.0%	0.8%	1.2%
Asian	8.9%	18.4%	7.8%	10.4%	3.1%	4.9%
Voting Age Pop.						
Latino	30.7%	21.2%	21.9%	29.9%	72.0%	13.1%
White	56.5%	55.8%	66.9%	54.6%	22.2%	79.2%
Black	1.5%	2.1%	1.6%	1.9%	0.7%	1.0%
Asian	9.5%	18.9%	7.9%	11.1%	3.8%	4.9%
Citizen Voting Age Pop D14						
Latino	20.6%	16.2%	16.5%	23.1%	50.8%	12.3%
White	65.0%	59.1%	71.1%	60.0%	41.6%	80.5%
Black	2.0%	2.7%	2.5%	2.8%	1.2%	0.5%
Asian	10.7%	20.3%	8.3%	12.0%	4.6%	5.1%
2016 Registered Voters						
Spanish Surname	16.4%	15.0%	13.3%	17.8%	43.6%	8.3%
Nov 2012 Voters						
Turnout	71.0%	73.1%	75.3%	65.8%	57.1%	74.8%
Spanish Surname	13.7%	13.6%	11.3%	14.8%	37.5%	7.6%
Nov 2014 Voters						
Turnout	41.8%	44.0%	48.2%	36.5%	29.6%	42.9%
Spanish Surname	10.1%	10.6%	7.9%	11.2%	29.5%	5.9%

Sample B

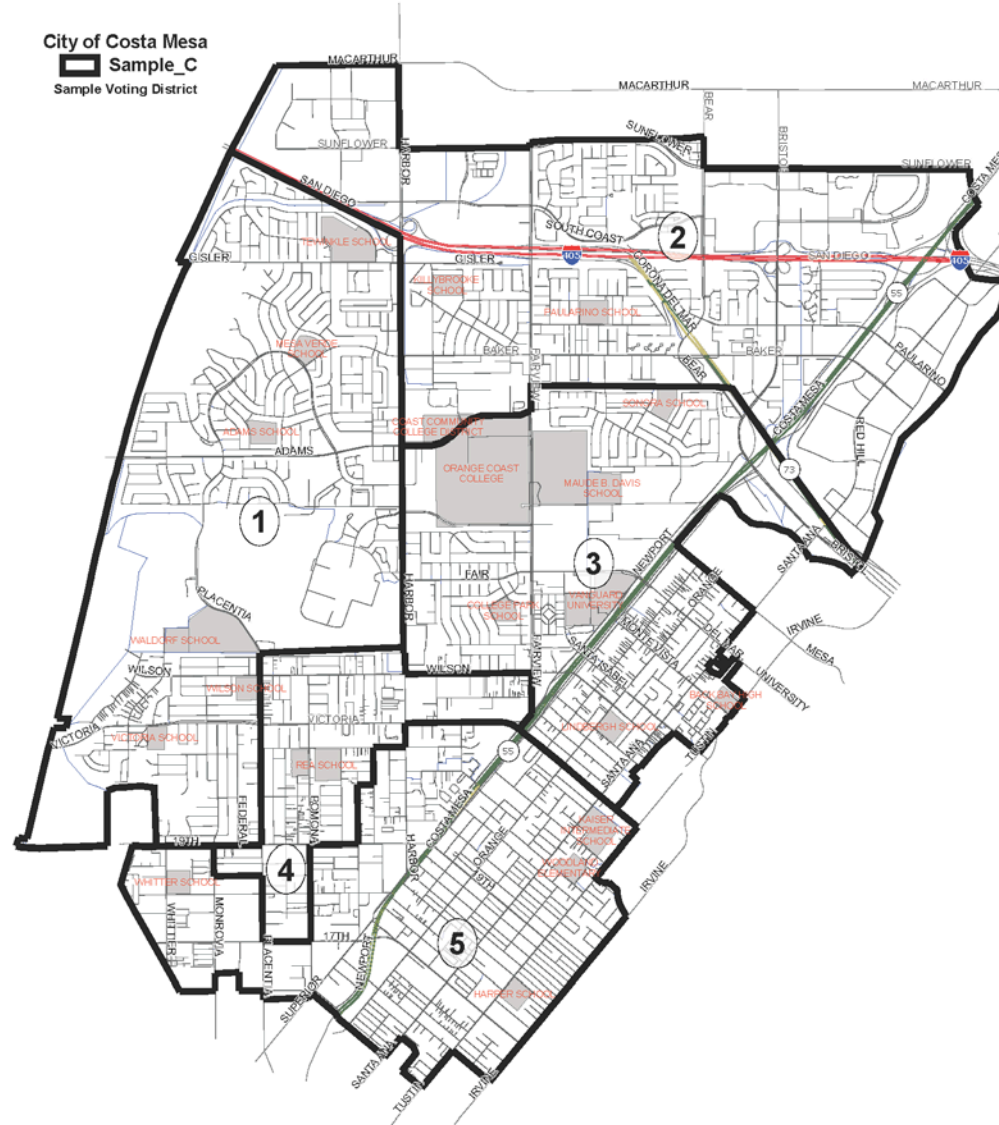


Sample B



District	City Total	Sample B				
		1	2	3	4	5
Population	110106	22009	22041	21827	22325	21904
Deviation		-12	20	-194	304	-117
% Deviation		-0.1%	0.1%	-0.9%	1.4%	-0.5%
Latino	35.8%	20.5%	31.0%	35.5%	76.7%	14.6%
White	51.9%	63.5%	47.1%	53.9%	17.9%	77.6%
Black	1.5%	1.5%	2.5%	1.7%	0.8%	1.2%
Asian	8.9%	12.5%	16.6%	7.1%	3.3%	4.9%
Voting Age Pop.						
Latino	30.7%	17.5%	26.6%	30.6%	70.8%	13.2%
White	56.5%	66.6%	50.8%	58.8%	23.0%	79.2%
Black	1.5%	1.4%	2.5%	1.6%	0.8%	1.0%
Asian	9.5%	12.7%	17.5%	7.3%	4.1%	4.9%
Citizen Voting Age Pop D14						
Latino	20.6%	12.7%	20.1%	22.6%	50.8%	12.3%
White	65.0%	70.6%	55.2%	64.5%	40.2%	80.5%
Black	2.0%	2.5%	3.8%	1.7%	1.5%	0.5%
Asian	10.7%	12.2%	19.0%	9.6%	5.7%	5.1%
2016 Registered Voters						
Spanish Surname	16.4%	11.3%	18.2%	18.5%	42.6%	8.3%
Nov 2012 Voters						
Turnout	71.0%	78.6%	64.4%	69.0%	57.9%	74.9%
Spanish Surname	13.7%	9.7%	16.5%	16.0%	35.9%	7.7%
Nov 2014 Voters						
Turnout	41.8%	51.3%	35.0%	40.5%	29.7%	42.9%
Spanish Surname	10.1%	7.6%	12.3%	11.4%	28.8%	5.9%

Sample C



Sample C

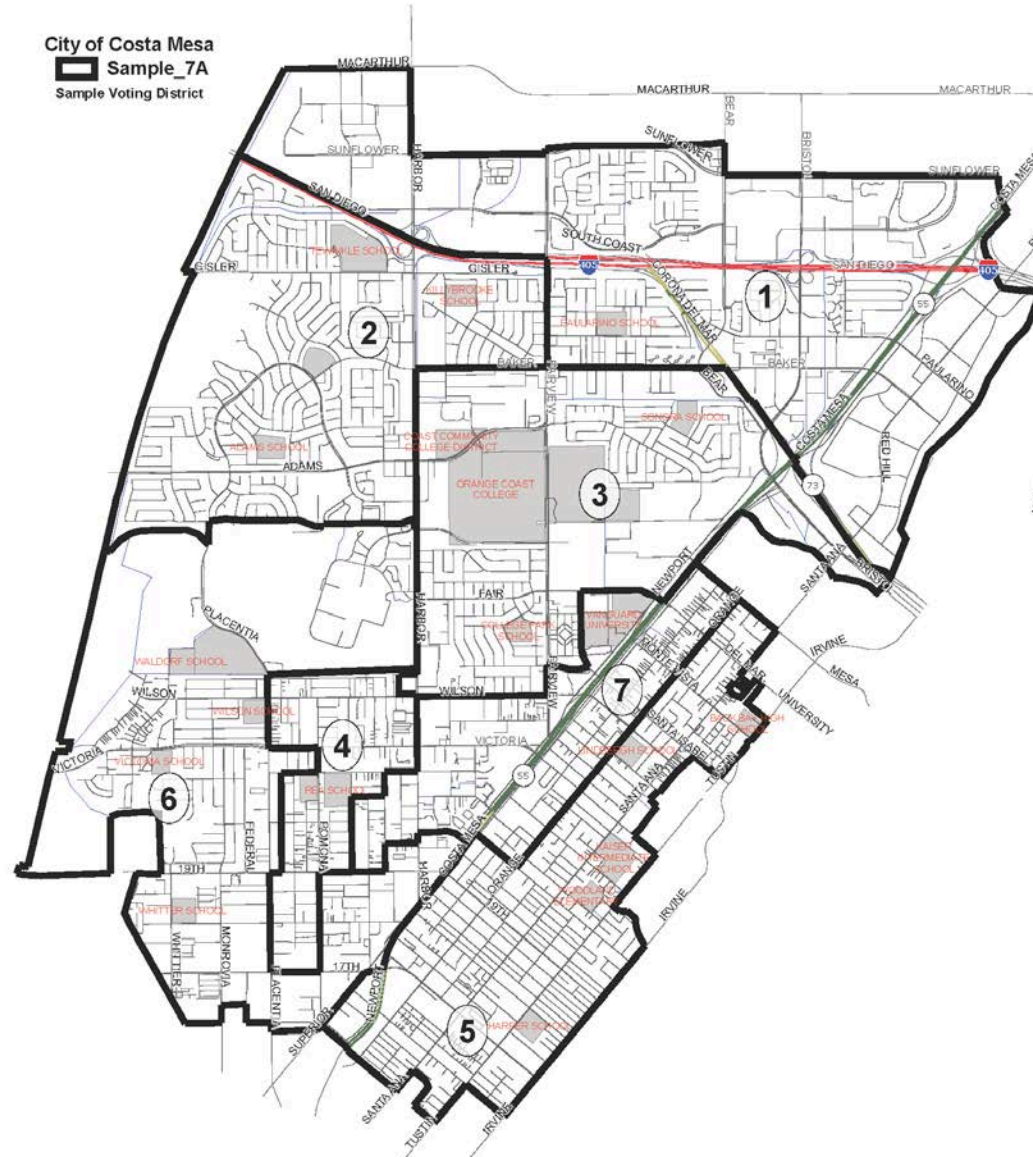


District	City Total	Sample C				
		1	2	4	3	5
Population	110106	21555	22057	22401	21859	22234
Deviation		-466	36	380	-162	213
% Deviation		-2.1%	0.2%	1.7%	-0.7%	1.0%
Latino	35.8%	23.6%	25.9%	76.0%	25.0%	27.5%
White	51.9%	65.0%	49.5%	18.3%	62.8%	64.6%
Black	1.5%	1.6%	2.5%	0.9%	1.4%	1.3%
Asian	8.9%	8.0%	19.7%	3.3%	8.4%	5.0%
Voting Age Pop.						
Latino	30.7%	20.4%	22.2%	70.3%	21.9%	23.8%
White	56.5%	68.4%	52.9%	23.3%	65.7%	68.3%
Black	1.5%	1.5%	2.4%	0.9%	1.4%	1.2%
Asian	9.5%	8.0%	20.3%	4.1%	8.8%	5.2%
Citizen Voting Age Pop D14						
Latino	20.6%	15.7%	16.8%	50.7%	18.6%	15.1%
White	65.0%	72.2%	57.2%	39.7%	68.7%	75.8%
Black	2.0%	2.3%	3.3%	1.6%	1.7%	0.9%
Asian	10.7%	8.3%	21.0%	6.0%	9.0%	6.5%
2016 Registered Voters						
Spanish Surname	16.4%	12.8%	16.2%	42.4%	13.1%	12.0%
Nov 2012 Voters						
Turnout	71.0%	77.0%	69.0%	57.5%	73.3%	70.5%
Spanish Surname	13.7%	10.9%	14.7%	35.9%	11.2%	10.2%
Nov 2014 Voters						
Turnout	41.8%	49.7%	39.4%	29.5%	42.8%	40.3%
Spanish Surname	10.1%	7.9%	11.0%	28.4%	8.9%	7.4%

Sample 7A



City of Costa Mesa
Sample 7A
Sample Voting District



Sample 7A



District	City Total	Sample 7A						
		1	2	3	4	5	6	7
Population	110106	15982	14965	15549	16075	16069	15465	16001
Deviation		253	-764	-180	346	340	-264	272
% Deviation		1.6%	-4.9%	-1.1%	2.2%	2.2%	-1.7%	1.7%
Latino	35.8%	23.8%	17.9%	33.1%	79.9%	11.9%	41.8%	41.0%
White	51.9%	50.2%	70.1%	50.1%	15.0%	80.7%	48.7%	49.4%
Black	1.5%	2.5%	1.4%	1.9%	0.8%	1.1%	1.5%	1.5%
Asian	8.9%	21.2%	8.7%	12.4%	2.9%	4.5%	6.4%	6.1%
Voting Age Pop.								
Latino	30.7%	20.5%	15.4%	28.5%	74.7%	11.0%	36.1%	34.9%
White	56.5%	53.5%	72.8%	54.0%	19.5%	82.1%	54.2%	54.9%
Black	1.5%	2.4%	1.3%	1.9%	0.8%	1.0%	1.5%	1.5%
Asian	9.5%	21.4%	8.8%	13.3%	3.7%	4.3%	6.8%	6.6%
Citizen Voting Age Pop D14								
Latino	20.6%	17.5%	11.2%	19.5%	50.7%	9.9%	24.8%	30.4%
White	65.0%	54.1%	77.7%	62.4%	41.4%	83.5%	63.2%	57.2%
Black	2.0%	3.4%	2.3%	2.9%	1.5%	0.5%	1.6%	1.7%
Asian	10.7%	23.0%	7.1%	12.7%	3.9%	4.4%	9.3%	9.7%
2016 Registered Voters								
Spanish Surname	16.4%	15.5%	9.6%	17.1%	46.9%	7.0%	20.9%	20.4%
Nov 2012 Voters								
Turnout	71.0%	70.5%	79.3%	67.8%	56.3%	76.3%	68.5%	65.3%
Spanish Surname	13.7%	14.4%	8.2%	14.2%	40.5%	6.6%	18.2%	17.4%
Nov 2014 Voters								
Turnout	41.8%	41.2%	52.9%	39.1%	28.5%	44.4%	40.0%	34.0%
Spanish Surname	10.1%	10.9%	6.7%	10.5%	31.9%	5.2%	12.7%	13.7%



Group Exercise

- Workgroups of 5-6 participants per table
- Use table map to identify:
 - Neighborhoods or communities
 - Connections
 - Barriers
 - Divisions
 - Points of interest
- Review and prioritize sample maps
- Report group findings
- Questions & Answer



What Happens Next



- Review community input and technical analysis
- Round 2, late June 2016
 - Community meetings and Meet the Expert one-on-one
- City Council Public Hearing, July 5, 2016
 - Present results and proposed maps
 - Receive public input
- City Council Public Hearing, August 2016
 - Present final analysis with recommendation for the adoption of districts to City Council



Stay Involved



- Visit the VDF webpage for additional details, and sign up to receive updates and meeting invitations at www.costamesaca.gov
- Submit a Districting Map via:
- Mail: City of Costa Mesa, Attn: Brenda Green, 77 Fair Drive Costa Mesa, CA 92626
- Email: districtelections@costamesaca.gov

