



Housing Element Update

2021-2029

*Virtual Townhall Meeting
November 18, 2020*



AutoSave OR Chen, Nick

DRAFT_Costa Mesa_Townhall Meeting_Presentation_11.18.2020.pptx

File Home Insert Design Transitions Animations **Slide Show** Review View Help BLUEBEAM PDF-XChange for AcroPlot Pro Search

From Beginning From Current Slide Present Online Custom Slide Show

Set Up Slide Show Hide Slide Rehearse Record Slide Show

Play Narrations Use Timings Show Media Controls

Monitor: Primary Monitor

Use Presenter View

Start Slide Show

1 **Housing Element Update**
Virtual Townhall Meeting November 18, 2021

2 **Housing Element Update**
Virtual Townhall Meeting November 18, 2021

3 **Guide for a Productive Workshop**

4 **Agenda**

5 **Costa Mesa At a Glance**

6 **The Costa Mesa Community**

Slide 1 of 27 Accessibility: Investigate

Participants (8)

Panelists (8) Attendees (0)

Find a participant

IG	Ines Galmiche (Me)		
	Brenda Green (Host)		
NC	Nick Chen (Co-host)		
DB	Dave Barquist (Co-host)		
SB	Stacy Bennett (Co-host)		

Invite Mute Me **Raise Hand**

Mute Start Video

Participants 8 Q&A Share Screen

Guide for a Productive Workshop

- We are excited you can join us!
 - There is time following the presentation for verbal questions. Please use the “raise hand” function and your name will be called.
 - For written comments, please use the “Question and Answer” function.
 - Actively participate – **we need your input!**
 - Be respectful and respect differences
 - Listen for understanding
 - Share your ideas with room for others
 - **Have fun!**

This presentation will be recorded and available on the City’s website:

costamesaca.gov/housing-element-update

Agenda

- Costa Mesa At-a-Glance
- What is the Housing Element?
- Regional Housing Needs Assessment (RHNA)
- Update Process and Outreach
- Opportunities for Engagement
- Community Conversation



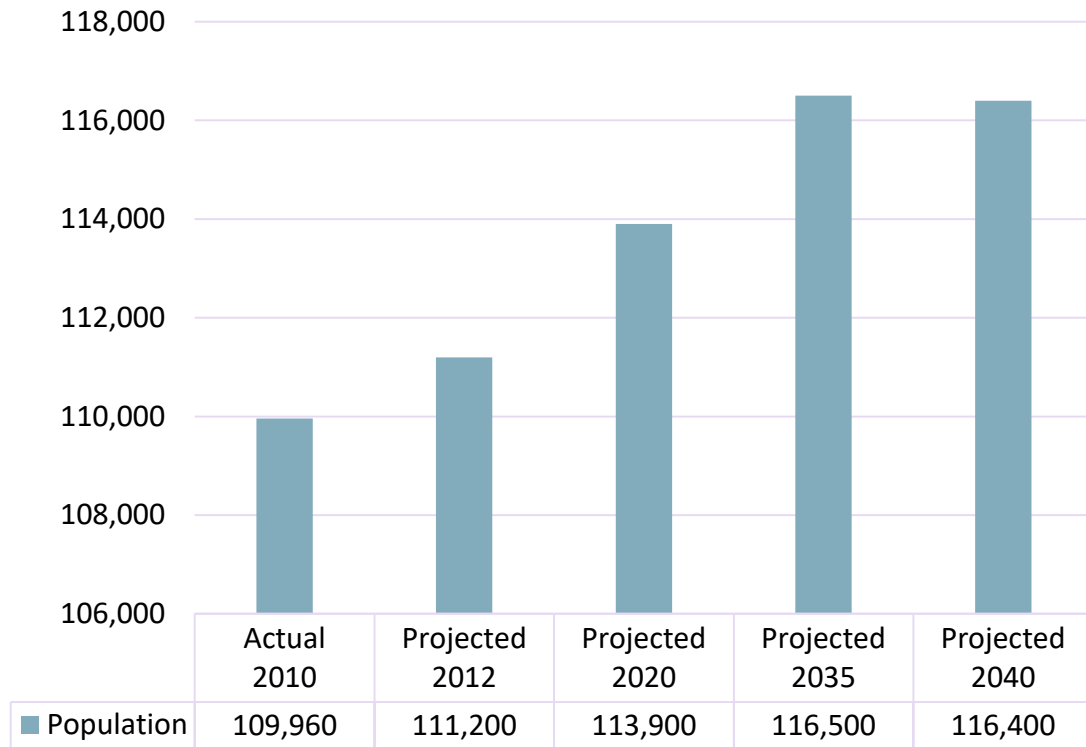
An aerial photograph of the Costa Mesa skyline at dusk. The sky is a mix of soft orange, pink, and grey tones. Several tall, modern skyscrapers are visible, with the most prominent one in the center-right. The foreground is filled with dense green trees and lower-rise buildings, creating a layered urban landscape. The overall mood is serene and professional.

Costa Mesa At-a-Glance

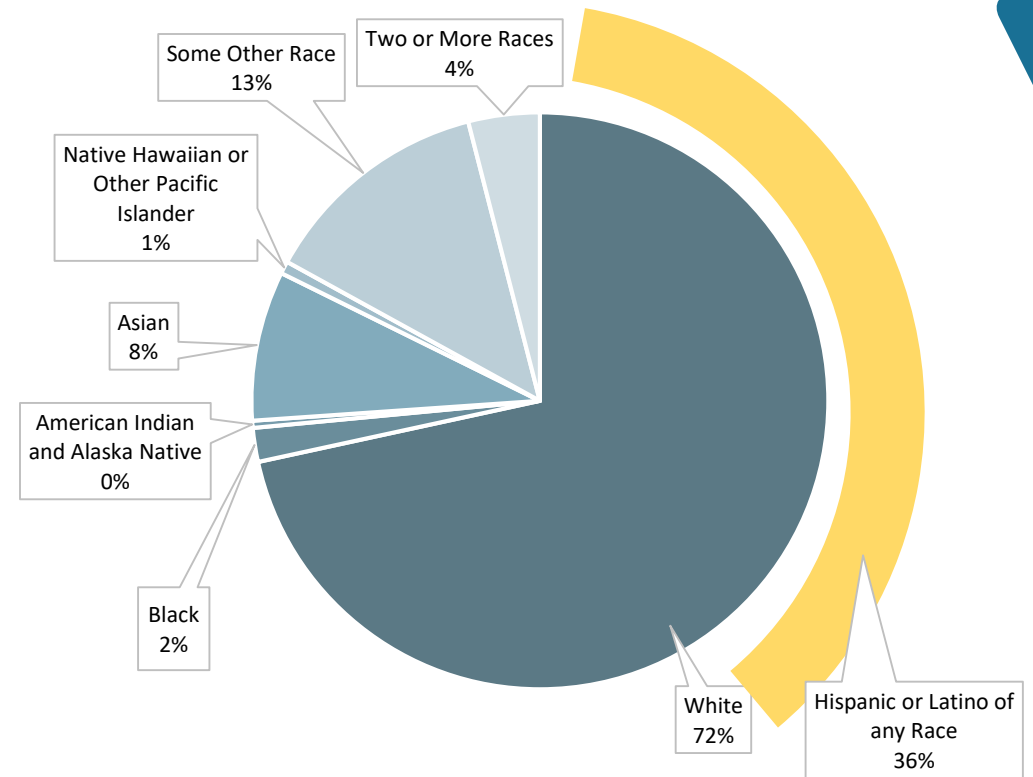
The Costa Mesa Community



Costa Mesa Population,
Actual and Projected 2000 – 2040



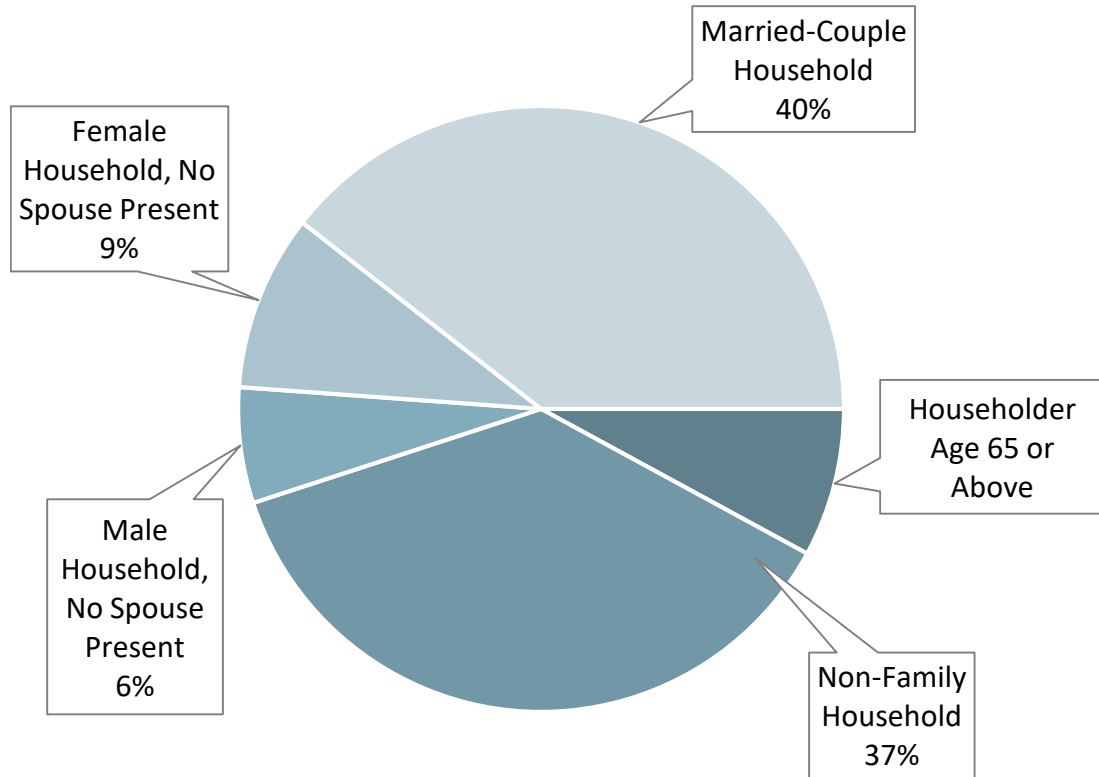
Costa Mesa Population by Race and Ethnicity



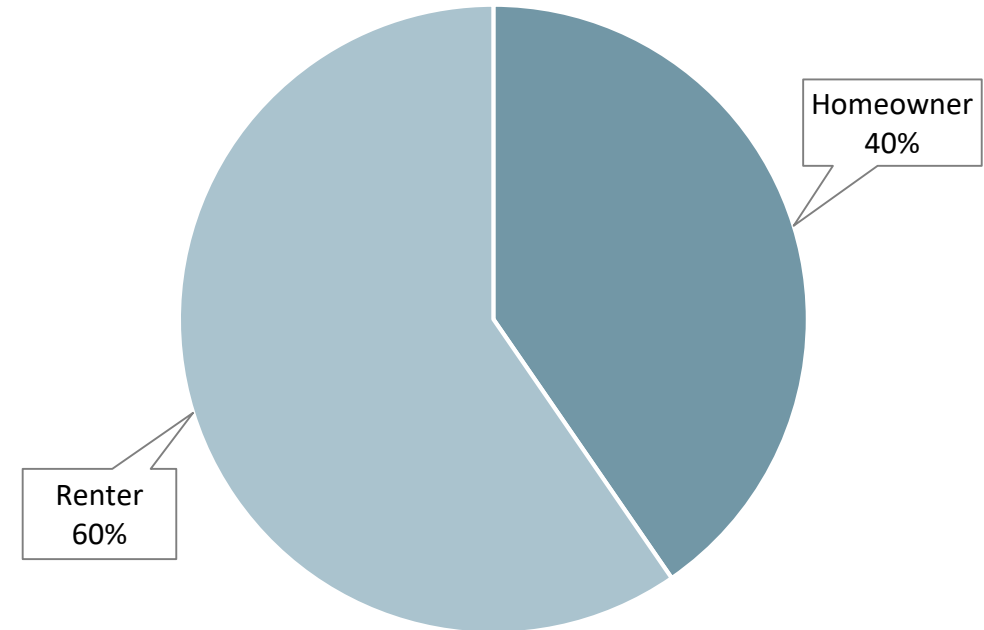
The Costa Mesa Community



Costa Mesa Households by Type



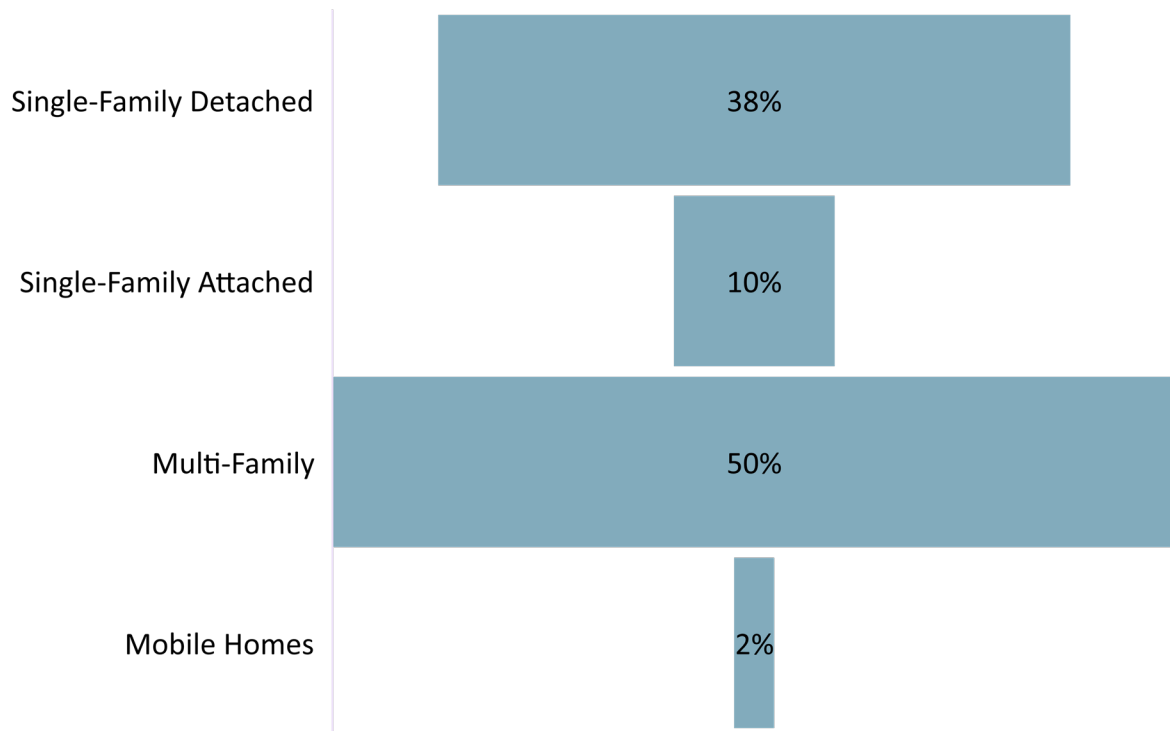
Households by Tenure, Owner or Renter



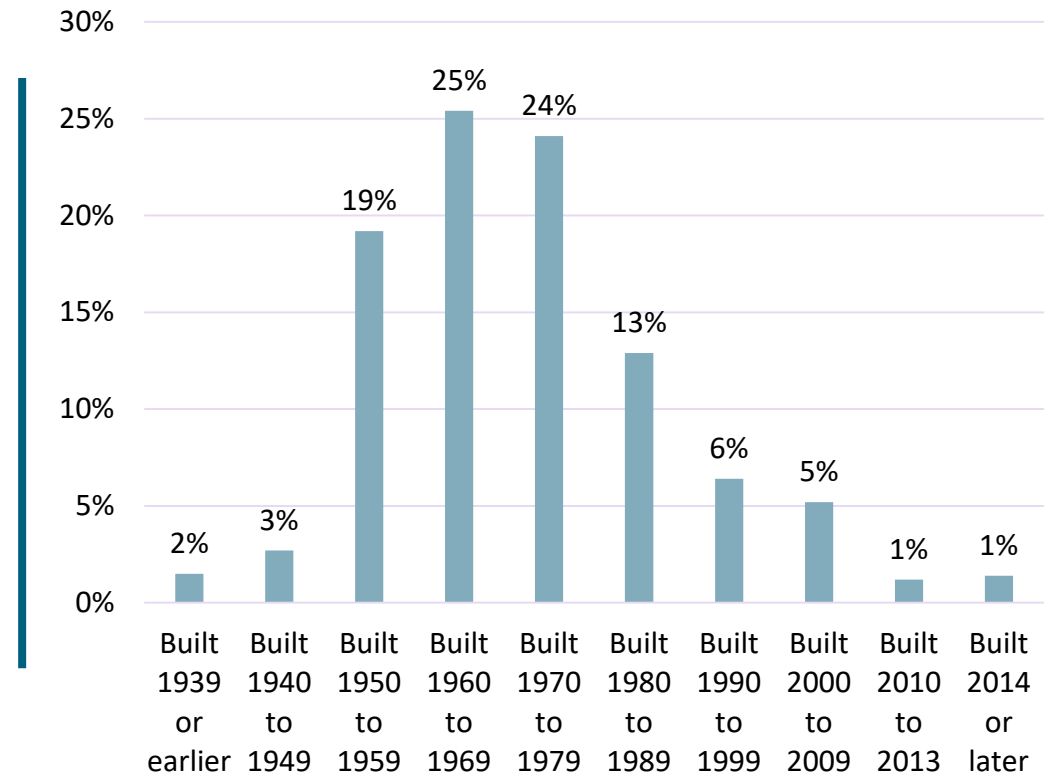
Housing in Costa Mesa



Housing by Type, Costa Mesa



Costa Mesa Housing Units by Year Constructed



An aerial photograph of a city skyline at dusk. The sky is a mix of dark blue and orange, with some clouds. Several tall, modern skyscrapers are visible, some with lights on. In the foreground, there are lower-rise buildings, trees, and a road. The text "What is the Housing Element?" is overlaid in the center in a white, sans-serif font.

What is the Housing Element?

What is the Housing Element?



Required Chapter of the Costa Mesa General Plan (the General Plan establishes long-range planning and policy for the City)



Identifies projected housing needs by income category



Provides goals, policies, programs, and quantified objectives to guide current need and future housing growth for all incomes in Costa Mesa



Requires certification by the Department of Housing and Community Development (HCD) for compliance with state laws

Why are Housing Elements Updated?

- Engages the community in the planning process
- Demonstrates Costa Mesa's ability to meet current and future housing growth need
- Establishes a plan for meeting the housing needs of all income levels
- Ensures the Housing Element is compliant with state housing laws



Housing Element Certification

What Does it Mean to Have a “Certified” Housing Element?

- Reviewed and certified by the Department of Housing and Community Development (HCD)
- Demonstrates substantial compliance with state law

Benefits of Certification

- Access to state grants and alternative funding sources
- Identifies the City’s ability to meet current and future growth needs

Housing Element Features

- Population and housing profile
- Evaluation of housing constraints and resources
- Evaluation of current programs and policies
- Analysis and identification of sites to accommodate the City's RHNA allocation
- Policies, programs, and quantified objectives to achieve the City's identified housing goals



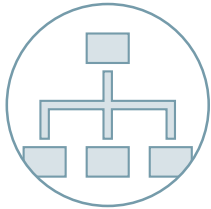
An aerial photograph of a city skyline at dusk. The sky is a mix of dark blue and orange, with some clouds. Several tall, modern skyscrapers are visible, some with lights on. The foreground shows a dense area of trees and lower-rise buildings. The text 'Regional Housing Needs Assessment (RHNA)' is overlaid in the center in a large, white, sans-serif font.

Regional Housing Needs Assessment (RHNA)

What is RHNA?



Statewide determination of units is split into regional allocations



Initiates the Housing Element Update process



Quantifies housing needs, by income category, within each County and City in California



Based on future growth in population, employment and households



How is RHNA determined?

**Department of
Housing and
Community
Development**

HCD determines and distributes the State's housing need to all the regional councils of government



**Southern California
Association of
Governments**

SCAG develops methodology to determine "fair share" distribution of the region's housing need to local jurisdictions



**City of Costa Mesa
RHNA Allocation,
2021-2029
*11,733 units***



Costa Mesa RHNA Allocation



Income Category	% of Area Median Income (AMI)	Income Range ¹		RHNA Allocation (Housing Units) ²
		Minimum	Maximum	
Very Low Income	0 - 50% AMI	--	\$51,500	2,912 units
Low Income	51 – 80% AMI	\$52,530	\$82,400	1,790 units
Moderate Income	81 – 120% AMI	\$83,430	\$133,900	2,084 units
Above Moderate Income	>120% AMI	\$133,900	--	4,947 units
TOTAL:				11,733 units

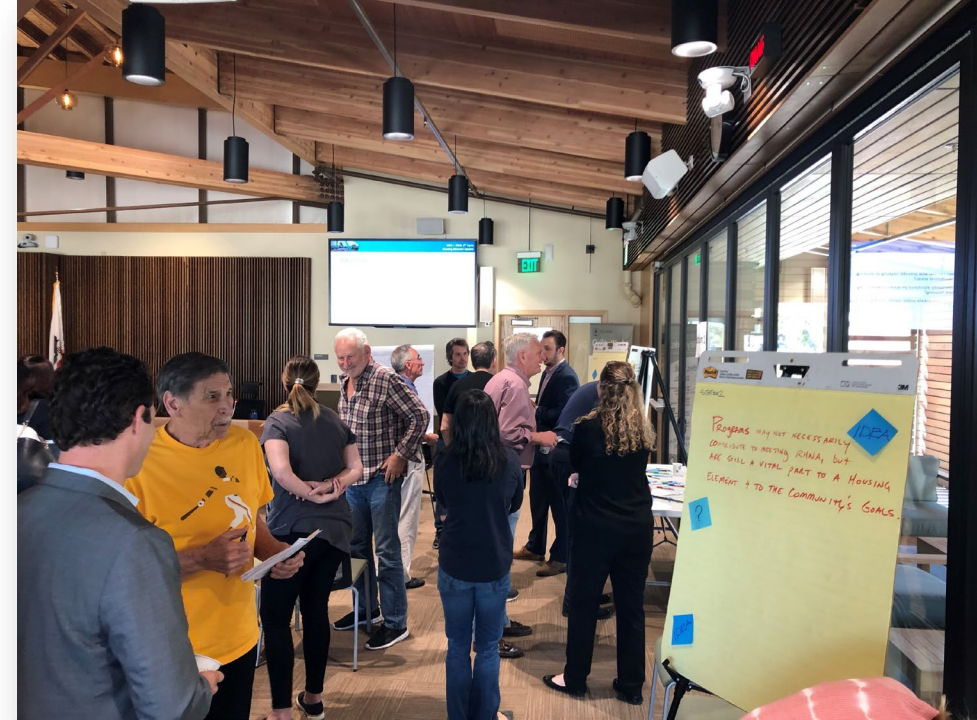
1. Income range is based on the 2020 HUD Area Median Income (AMI) for Orange County of \$103,000.
2. RHNA Allocation is in draft form and subject to change pending final approval by SCAG (9/3/2020).

An aerial photograph of a city skyline at dusk. The sky is a mix of dark blue and orange, with scattered clouds. Several tall, modern skyscrapers are visible, some with lights on. In the foreground, there are green trees and a road. The text "Update Process and Outreach" is overlaid in the center in a white, sans-serif font.

Update Process and Outreach

What is Included in the Update Process?

- Comprehensive community outreach
- The City's demographic conditions
- Adequate sites to meet the City's RHNA allocation
- Goals, policies, programs and quantified objectives
- Public Hearings before Planning Commission and City Council



An aerial photograph of a city skyline at dusk. The sky is a mix of soft orange, pink, and grey tones. Several tall, modern skyscrapers are visible, some with lights beginning to glow. The foreground is filled with a dense canopy of green trees, and a road with a few cars is visible in the lower left. The overall atmosphere is calm and urban.

Opportunities for Engagement

Tentative Public Participation Upcoming Opportunities

**Community
Townhall
#1**

November 18

**Districts
Meetings,
Round 1**

December
2020

**Subject
Matter
Expert
Meeting**

December
2020

**City Council
Study
Session**

January 2021

**Community
Survey**

November
2020

**District
Meetings,
Round 2**

December
2020

**Targeted
Focus
Groups**

December
2020

How Can You Engage?

Your participation is vital to the Housing Element Update!

There are numerous opportunities for participation including:

- Workshops
- Surveys
- District Meetings
- City Council and Planning Commission Study Sessions
- Review of the Public Review Draft

The City will continue to provide detailed information and dates for additional community engagement, visit costamesaca.gov/housing-element-update



We Want Your Input!

Participate in the Housing Element Survey!

Go to:

costamesaca.gov/housing-element-update

Click the link titled “Take Survey” to begin.

87°F | Meetings | E-notification | Notices | Employment | Select Language

Costa Mesa City of the Arts

Hot Topics | Services | About | City Hall | Residents | Business | I Want To...

2021-2029 HOUSING element

City Hall > City departments > Development Services > Planning >

HOUSING ELEMENT UPDATE

Font Size: | Share & Bookmark | Feedback | Print

FIRST VIRTUAL COMMUNITY TOWNHALL MEETING!

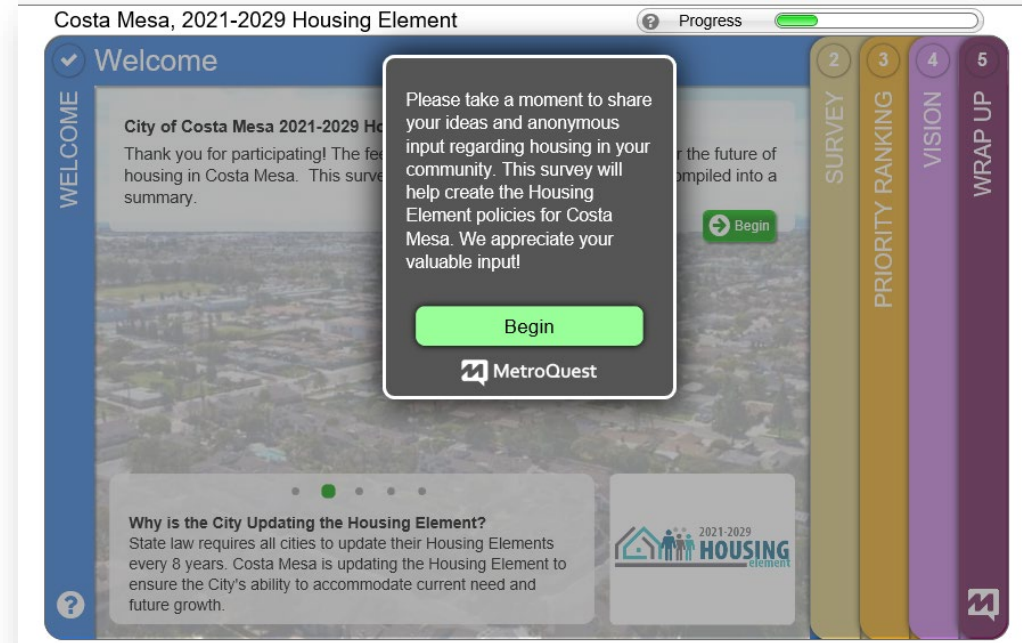
WEDNESDAY, NOVEMBER 18, 2020

ZOOM MEETING STARTING AT 6PM (ENGLISH)	ZOOM MEETING STARTING AT 7:30PM (ESPAÑOL)
Please click the link below to join the webinar: https://zoom.us/j/9386847179?pwd=WWJ5WVl2emhUL1REdkl1N3NGTUJJU09 Passcode: 225629 Or Telephone: US: +1 669 900 6833 Webinar ID: 938 6847 7179 Passcode: 225629	Por favor haga clic en el enlace que aparece abajo para participar en el seminario web: https://zoom.us/j/98773680251?pwd=anFxREVkVkkN3UGZoaZ04HhDYjZzZz09 Contraseña: 824777 Estados Unidos: +1 669 900 6833 ID de Seminario Web: 987 7368 0251 Contraseña: 824777 Números Internacionales Disponibles: https://zoom.us/u/aerzM2iwnu

We need your input! The first Virtual Community Townhall Meeting is scheduled for November 18, 2020. Please join us to learn more about the Housing Element Update, now State

How to Use the Survey

1. Click the link provided on the City's website using either your phone or a desktop/laptop
2. Click "*Begin*" to start the survey
3. Carefully read the instructions on each slide
4. Respond to the provided prompts with your ideas and input
5. Complete slide five and click "*Submit Final Questions*" to complete the survey and submit all responses



The survey provides the City with important community feedback to help shape goals and policies within the Housing Element. Your input is very important!

An aerial photograph of a city skyline at dusk. The sky is a mix of dark blues and oranges from the setting sun. Several tall, modern skyscrapers are visible, some with lights beginning to glow. In the foreground, there are dense green trees and a network of streets. The overall scene is a blend of urban architecture and nature.

Community Conversation

AutoSave OR DRAFT_Costa Mesa_Townhall Meeting_Presentation_11.18.2020.pptx Chen, Nick

File Home Insert Design Transitions Animations **Slide Show** Review View Help BLUEBEAM PDF-XChange for AcroPlot Pro Search

From Beginning From Current Slide Present Online Custom Slide Show

Set Up Slide Show Hide Slide Rehearse Record Slide Show

Play Narrations Use Timings Show Media Controls

Monitor: Primary Monitor Use Presenter View

Start Slide Show

1 **Housing Element Update**
Virtual Townhall Meeting
November 18, 2021

2 **Housing Element Update**
Virtual Townhall Meeting
November 18, 2021

3 **Guide for a Productive Workshop**

4 **Agenda**

5 **Costa Mesa At a Glance**

6 **The Costa Mesa Community**

Slide 1 of 27 Accessibility: Investigate

Costa Mesa

Housing Element Update 2021-2029

Virtual Townhall Meeting November 18, 2021

Participants (8)

Panelists (8) Attendees (0)

Find a participant

Participant	Microphone	Video
IG Ines Galmiche (Me)	🔇	🚫
Brenda Green (Host)	🚫	🚫
NC Nick Chen (Co-host)	🟢	🚫
DB Dave Barquist (Co-host)	🚫	🚫
SB Stacy Bennett (Co-host)	🚫	🚫

Invite Mute Me **Raise Hand**

Mute Start Video

Participants 8 Q&A Share Screen

Thank you!

Questions?

Please contact:

Minoo Ashabi, Principal Planner

Email: housing-element@costamesaca.gov

Or visit: costamesaca.gov/housing-element-update