

## Fire Extinguishers

### Remember to P.A.S.S.

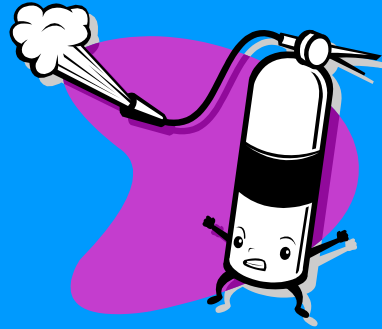
*P – pull the pin*

*A – aim at the base of the fire*

*S – squeeze the handle*

*S – sweep back and forth*

*Keep a safe distance. Back away from the fire. Close doors and get to safety.*



A portable fire extinguisher can save lives and property by putting out a small fire or containing it until the fire department arrives; but portable extinguishers have limitations. Because fire grows and spreads so rapidly, the number one priority is to get out safely.

#### Safety tips:

- Use a portable fire extinguisher when the fire is confined to a small area, such as a wastebasket, and is not growing; everyone has exited the building; the fire department has been called or is being called; and the room is not filled with smoke.
- To operate a fire extinguisher, remember the word **PASS**:
  - **P**ull the pin. Hold the extinguisher with the nozzle pointing away from you, and release the locking mechanism.
  - **A**im low. Point the extinguisher at the base of the fire.
  - **S**queeze the lever slowly and evenly.
  - **S**weep the nozzle from side-to-side.
- For the business, select a multi-purpose extinguisher (can be used on all types of fires) that **meets the fire department's regulations** (at least one 2A.10BC). Must be "tagged" with date of inspection. For the home, select a multi-purpose extinguisher (used for all types of fires - paper, wood, flammable liquids, energized electrical equipment) that is large enough to put out a small fire, but not so heavy as to be difficult to handle. Mark the date of purchase on the bottom.
- Install fire extinguishers close to an exit and keep your back to a clear exit when you use the device so you can make an easy escape if the fire cannot be controlled. If the room fills with smoke, leave immediately.
- Choose a fire extinguisher that carries the label of an independent testing laboratory. (UL)
- Read the instructions that come with the fire extinguisher and become familiar with its parts and operation before a fire breaks out.
- Know when to go. Fire extinguishers are one element of a fire response plan, but the primary element is safe escape. Every business and household should have working smoke alarms and a "practiced" fire escape plan.